

1. INSTRUCTIONS

1) INTERVAL OF MAINTENANCE

- (1) You may inspect and service the machine by the period as described at page 6-10 based on service meter of monitor.
- (2) Shorten the interval of inspect and service depending on site condition. (Such as dusty area, quarry, sea shore and etc.)
- (3) Practice the entire related details at the same time when the service interval is doubled.
For example, in case of 250 hours, carry out all the maintenance 「each 250 hours, each 100 hours and daily service」 at the same time.



75796MI14

2) PRECAUTION

- (1) Start maintenance after you have the full knowledge of machine.
- (2) The cluster and monitor installed on this machine do not entirely guarantee the condition of the machine.
Daily inspection should be performed according to chapter 6, Maintenance.
- (3) Engine and hydraulic components have been preset in the factory.
Do not allow unauthorized personnel to reset them.
- (4) Ask to your local dealer or Hyundai for maintenance advise if unknown.
- (5) Drain the used oil and coolant in a container and handle according to the method of handling for industrial waste to meet with regulations of each province or country.

3) PROPER MAINTENANCE

(1) Replace and repair of parts

It is required to replace the wearable and consumable parts such as bucket tooth, cutting edge, filter and etc., regularly.

Replace damaged or worn parts at proper time to keep the performance of machine.

(2) Use genuine parts.

(3) Use the recommended oil.

(4) Remove the dust or water around the inlet of oil tank before supplying oil.

(5) Drain oil when the temperature of oil is warm.

(6) Do not repair anything while operating the engine.

Stop the engine when you fill the oil.

(7) Relieve hydraulic system of the pressure by opening of breather when repairing the hydraulic system.

(8) Confirm if the cluster is in the normal condition after completion of service.

(9) For more detail information of maintenance, please contact local Hyundai dealer.

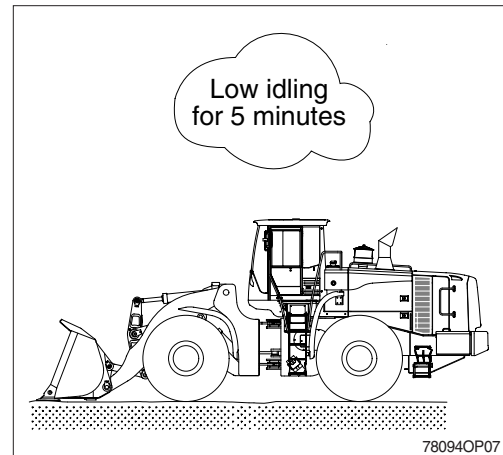
※ **Be sure to start the maintenance after fully understand the chapter 1, Safety hints.**

4) RELIEVING THE PRESSURE IN THE HYDRAULIC SYSTEM

※ Spouting of oil can cause the accident when loosening the cap or hose right after the operating of the machine as the machine or oil is on the high pressure on the condition.

Be sure to relieve the pressure in the system before repairing hydraulic system.

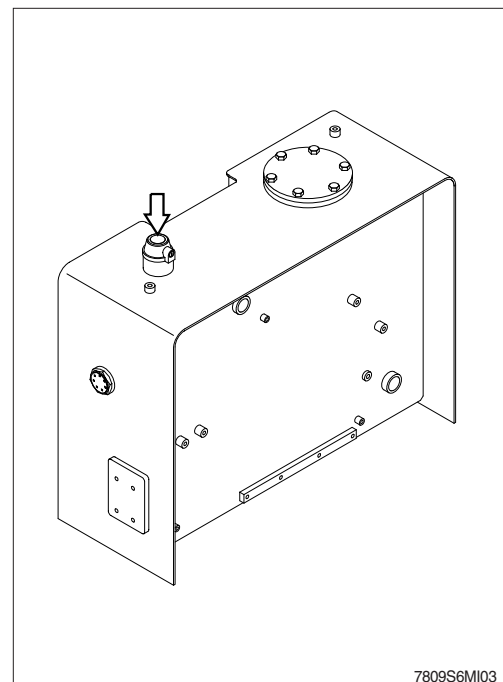
- (1) Place the machine in parking position, and stop the engine.



- (2) Relieve the pressure in the tank by pushing the top of the air breather.

※ Due to high pressure inside the tank, cover maybe blown up.

Take caution before removing cover.



5) PRECAUTION WHEN INSTALLING HYDRAULIC HOSES OR PIPES

- (1) Be particularly careful that the joint of hose, pipe and functioning item are not damaged.
Avoid contamination.
- (2) Assemble after cleaning the hose, pipe and joint of functioning item.
- (3) Use genuine parts.
- (4) Do not assemble the hose in the condition of twisted or sharp radius.
- (5) Keep the specified tighten torque.

6) PERIODICAL REPLACEMENT OF SAFETY PARTS

- (1) These are the parts which the operator can not judge the remained lifetime of them by visual inspection.
- (2) Repair or replace if an abnormality of these parts is found even before the recommended replacement interval.

Periodical replacement of safety parts	Interval
Fuel hose (engine-tank)	Every 2 years
Hose of steering system	
Packing, seal and O-ring of steering cylinder	
Hose of brake system	
Piston seal and packing of boom, bucket cylinder	

- ※ 1. **Replace the O-ring and gasket at the same time when replace the hose.**
- ※ 2. **Replace clamp at the same time if the hose clamp is cracked when checking and replacing the hose.**

2. TIGHTENING TORQUE

Use following table for unspecified torque.

1) BOLT AND NUT

(1) Coarse thread

Bolt size	8T		10T	
	kg · m	lb · ft	kg · m	lb · ft
M 6 × 1.0	0.85 ~ 1.25	6.15 ~ 9.04	1.14 ~ 1.74	8.2 ~ 12.6
M 8 × 1.25	2.0 ~ 3.0	14.5 ~ 21.7	2.73 ~ 4.12	19.5 ~ 29.8
M10 × 1.5	4.0 ~ 6.0	28.9 ~ 43.4	5.5 ~ 8.3	39.8 ~ 60
M12 × 1.75	7.4 ~ 11.2	53.5 ~ 79.5	9.8 ~ 15.8	71 ~ 114
M14 × 2.0	12.2 ~ 16.6	88.2 ~ 120	16.7 ~ 22.5	121 ~ 167
M16 × 2.0	18.6 ~ 25.2	135 ~ 182	25.2 ~ 34.2	182 ~ 247
M18 × 2.5	25.8 ~ 35.0	187 ~ 253	35.1 ~ 47.5	254 ~ 343
M20 × 2.5	36.2 ~ 49.0	262 ~ 354	49.2 ~ 66.6	356 ~ 482
M22 × 2.5	48.3 ~ 63.3	350 ~ 457	65.8 ~ 98.0	476 ~ 709
M24 × 3.0	62.5 ~ 84.5	452 ~ 611	85.0 ~ 115	615 ~ 832
M30 × 3.0	124 ~ 168	898 ~ 1214	169 ~ 229	1223 ~ 1655
M36 × 4.0	174 ~ 236	1261 ~ 1703	250 ~ 310	1808 ~ 2242

(2) Fine thread

Bolt size	8T		10T	
	kg · m	lb · ft	kg · m	lb · ft
M 8 × 1.0	2.17 ~ 3.37	15.7 ~ 24.3	3.04 ~ 4.44	22.0 ~ 32.0
M10 × 1.25	4.46 ~ 6.66	32.3 ~ 48.2	5.93 ~ 8.93	42.9 ~ 64.6
M12 × 1.25	7.78 ~ 11.58	76.3 ~ 83.7	10.6 ~ 16.0	76.6 ~ 115
M14 × 1.5	13.3 ~ 18.1	96.2 ~ 130	17.9 ~ 24.1	130 ~ 174
M16 × 1.5	19.9 ~ 26.9	144 ~ 194	26.6 ~ 36.0	193 ~ 260
M18 × 1.5	28.6 ~ 43.6	207 ~ 315	38.4 ~ 52.0	278 ~ 376
M20 × 1.5	40.0 ~ 54.0	289 ~ 390	53.4 ~ 72.2	386 ~ 522
M22 × 1.5	52.7 ~ 71.3	381 ~ 515	70.7 ~ 95.7	512 ~ 692
M24 × 2.0	67.9 ~ 91.9	491 ~ 664	90.9 ~ 123	658 ~ 890
M30 × 2.0	137 ~ 185	990 ~ 1338	182 ~ 248	1314 ~ 1795
M36 × 3.0	192 ~ 260	1389 ~ 1879	262 ~ 354	1893 ~ 2561

2) PIPE AND HOSE (FLARE type)

Thread size	Width across flat (mm)	kgf · m	lbf · ft
1/4"	19	4	28.9
3/8"	22	5	36.2
1/2"	27	9.5	68.7
3/4"	36	18	130
1"	41	21	152
1-1/4"	50	35	253

3) PIPE AND HOSE (ORFS type)

Thread size	Width across flat (mm)	kgf · m	lbf · ft
9/16-18	19	4	28.9
11/16-16	22	5	36.2
13/16-16	27	9.5	68.7
1-3/16-12	36	18	130
1-7/16-12	41	21	152
1-11/16-12	50	35	253

4) FITTING

Thread size	Width across flat (mm)	kgf · m	lbf · ft
1/4"	19	4	28.9
3/8"	22	5	36.2
1/2"	27	9.5	68.7
3/4"	36	18	130
1"	41	21	152
1-1/4"	50	35	253

5) TIGHTENING TORQUE OF MAJOR COMPONENT

No.	Descriptions		Bolt size	Torque	
				kgf · m	lbf · ft
1	Engine	Engine mounting bolt, nut (rubber, 4EA)	M24×3.0	100 ± 15.0	723 ± 108
2		Engine mounling bolt (flywheel housing, 14EA)	M10×1.5	4.6 ± 0.7	33.3 ± 5.1
3		Engine mounling bolt (coupling, 8EA)	1/2-13UNC	8.37 ± 0.41	53.3 ± 3.0
4		Engine mounting bolt (gear housing, 6EA)	M10×1.5	4.6 ± 0.7	33.3 ± 5.1
5		Radiator mounting bolt	M20×2.5	57.9 ± 8.7	419 ± 62.9
6		Fuel tank mounting bolt, nut	M16×2.0	29.7 ± 4.5	215 ± 32.5
7	Hydraulic system	Main pump housing mounting bolt	M16×2.0	29.7 ± 4.5	215 ± 32.5
8		Steering pump housing mounting bolt	M16×2.0	29.7 ± 4.5	215 ± 32.5
9		Main control valve mounting bolt	M12×1.75	12.8 ± 3.0	92.6 ± 21.7
10		Steering unit mounting bolt	M10×1.5	6.9 ± 1.4	49.9 ± 10.1
11		Flow amplifier mounting bolt	M10×1.5	6.9 ± 1.4	49.9 ± 10.1
12		Brake valve mounting bolt	M8×1.25	2.5 ± 0.5	18.1 ± 3.6
13		Cut-off valve mounting bolt	M12×1.75	12.3 ± 2.0	89.0 ± 14
14		Remote control lever mounting bolt	M6×1.0	1.1 ± 0.2	8.0 ± 1.4
15		Safety valve	M8×1.25	2.5 ± 0.5	18.1 ± 3.6
16		Hydraulic oil tank mounting bolt	M20×2.5	57.9 ± 8.7	419 ± 62.9
17	Power train system	Transmission mounting bolt, nut (rubber, 4EA)	M24×3.0	100 ± 15.0	723 ± 108
18		Transmission mounting bolt (bracket, 8EA)	M20×2.5	24.0 ± 2.4	174 ± 18.1
19		Transmission bolt (bracket, converter side)	M16×2.0	18.4 ± 2.0	133 ± 14.5
20		Front axle mounting bolt, nut	M36×3.0	270 ± 30	1950 ± 217
21		Rear axle support mounting bolt, nut	M36×3.0	270 ± 30	1950 ± 217
22		Tire mounting nut	M22×1.5	79 ± 2.5	571 ± 18
23		Drive shaft joint mounting bolt (front, center, rear)	1/2-20UNF	15.5 ± 0.5	112 ± 3.6
24		Drive shaft joint mounting bolt (upper)	1/2-20UNF	10.5 ± 0.5	75.9 ± 3.6
25	Others	Counterweight mounting bolt	M30×2.0	199 ± 30	1439 ± 217
26		Counterweight mounting bolt	M24×3.0	100 ± 15	723 ± 108
27		Operator's seat mounting bolt	M8×1.25	3.4 ± 0.8	24.6 ± 5
28		Cab mounting bolt (4EA)	M20×2.5	58 ± 8.7	419 ± 63

3. SPECIFICATION OF FUEL, COOLANT AND LUBRICANTS

1) NEW MACHINE

New machine used and filled with following lubricants.

Description	Specification
Engine oil	SAE 15W-40(API CH-4)
Hydraulic oil	Hyundai genuine long life hydraulic oil (ISO VG46, VG68 only) Conventional hydraulic oil (ISO VG15)
Transmission oil	SAE 15W-40
Axle oil	*Refer to below list
Grease	Lithium base grease NLGI No. 2
Fuel	ASTM D975-No. 2
Coolant (DCA4)	ASTM D6210 Mixture of 50% ethylene glycol base antifreeze and 50% water

SAE : Society of Automotive Engineers

API : American Petroleum Institute

ISO : International Organization for Standardization

NLGI : National Lubricating Grease Institute

ASTM : American Society of Testing and Material

DCA4 : Brand name of Chemical Additive

manufactured by the Cummins Fleetguard Co

* Recommended oil list

- BP TERRAC SUPER TRANSMISSION 10W-30

- CASTROL AGRI TRANS PLUS 10W-30

- MOBILFLUID 426

- SHELL SPIRAX S4 TXM

- TOTAL DYNATRANS MPV

2) RECOMMENDED LUBRICANTS

Use only oils listed below or equivalent.

Do not mix different brand oil.

Service point	Kind of fluid	Capacity ℓ (U.S. gal)	Ambient temperature °C (°F)							
			-50 (-58)	-30 (-22)	-20 (-4)	-10 (14)	0 (32)	10 (50)	20 (68)	30 (86)
Engine oil pan	Engine oil	38 (10.0)	★ ¹ SAE 5W-40							
			SAE 30							
			SAE 10W							
			SAE 10W-30							
			SAE 15W-40							
Transmission	Engine oil	43 (11.4)	SAE 10W-30							
			SAE 15W-40							
Axle	UTTO	Front : 58 (15.3)	★Refer to below list							
		Rear : 58 (15.3)								
Hydraulic tank	Hydraulic oil	Tank: 203 (53.6)	★ ¹ ISO VG 15							
		System: 336 (88.8)	ISO VG 46							
			ISO VG 68							
Fuel tank	Diesel fuel	450 (118.8)	★ ¹ ASTM D975 NO.1							
			ASTM D975 NO.2							
Fitting (grease nipple)	Grease	As required	★ ¹ NLGI NO.1							
			NLGI NO.2							
Radiator (reservoir tank)	Mixture of antifreeze and soft water★ ²	65 (17.1)	Ethylene glycol base permanent type (50 : 50)							
			★ ¹ Ethylene glycol base permanent type (60 : 40)							

- SAE : Society of Automotive Engineers
- API : American Petroleum Institute
- ISO : International Organization for Standardization
- NLGI : National Lubricating Grease Institute
- ASTM : American Society of Testing and Material
- UTTO : Universal Tractor Transmission Oil

- ★ Recommended oil list
 - BP TERRAC SUPER TRANSMISSION 10W-30
 - CASTROL AGRI TRANS PLUS 10W-30
 - MOBILFLUID 426
 - SHELL SPIRAX S4 TXM
 - TOTAL DYNATRANS MPV

★¹ Cold region
Russia, CIS, Mongolia

★² Soft water
City water or distilled water

4. MAINTENANCE CHECK LIST

Scheduled maintenance is the normal maintenance necessary to provide proper and efficient machine operation. To protect your investment and prolong the service life of your machine, follow the scheduled maintenance list below.

1) EVERY 10 HOURS SERVICE

Check items	Service	Page
Hydraulic oil level	Check, Add	6-27
Engine oil level	Check, Add	6-15
Radiator coolant level	Check, Add	6-17
Fan belt tension & damage	Check	6-21, 22

2) EVERY 50 HOURS SERVICE

Check items	Service	Page
Attachment pins	Lubricate	6-39
Tire (air)	Check, Add	6-30
Drive shaft (flange bearing)	Lubricate	6-37
Drive shaft (center, rear, upper)	Lubricate	6-37
Steering cylinder pins	Lubricate	6-37
Rear axle pivot	Lubricate	6-37

3) INITIAL 250 HOURS SERVICE

Check items	Service	Page
Engine oil	Change	6-15, 16, 17
Engine oil filter	Replace	6-15, 16, 17
Fuel filter element	Replace	6-24
Transmission oil	Change	6-33, 34
Transmission oil filter	Replace	6-33, 34
Front axle oil	Change	6-35, 36
Rear axle oil	Change	6-35, 36
Hydraulic oil return filter	Replace	6-28
Pilot line filter element	Replace	6-29

4) EVERY 250 HOURS SERVICE

Check items	Service	Page
Engine oil	Change	6-15, 16, 17
Engine oil filter	Replace	6-15, 16, 17
Fuel tank (water, sediment)	Drain	6-23
Hydraulic tank air breather element	Replace	6-28
Hydraulic oil return filter (-#0259)	Replace	6-28
Brake line filter (strainer)	Check, Clean	6-29
Pilot line filter	Replace	6-29
Wheel nuts	Check, Tight	6-31, 32
Battery (voltage)	Check	6-41, 42
Air conditioner and heater outer filter	Check, Clean	6-44

5) EVERY 500 HOURS SERVICE

Check items	Service	Page
Radiator, oil cooler, change air cooler	Check, Clean	6-20
Coolant test (DCA4 concentration)	Test, Add	6-20-1, 2
Air cleaner element (primary)	Clean	6-23
Fuel filter element	Replace	6-24
Coolant filter (corrosion resistor)	Replace	6-25

6) EVERY 1000 HOURS SERVICE

Check items	Service	Page
Hydraulic oil return filter (#0260-)	Replace	6-28
Transmission oil	Change	6-33, 34
Transmission oil filter	Replace	6-33, 34
Center pivot pin	Lubricate	6-37
Aircon and heater outer filter	Replace	6-44

7) EVERY 1500 HOURS SERVICE

Check items	Service	Page
Front axle oil	Change	6-35, 36
Rear axle oil	Change	6-35, 36

8) EVERY 2000 HOURS SERVICE

Check items	Service	Page
Hydraulic oil *1	Change	6-27
Radiator coolant	Change	6-17, 18, 19, 20
Hoses, fittings, clamps (fuel, coolant, hydraulic)	Check, Retighten, Replace	-

*1 Conventional hydraulic oil

9) EVERY 5000 HOURS SERVICE

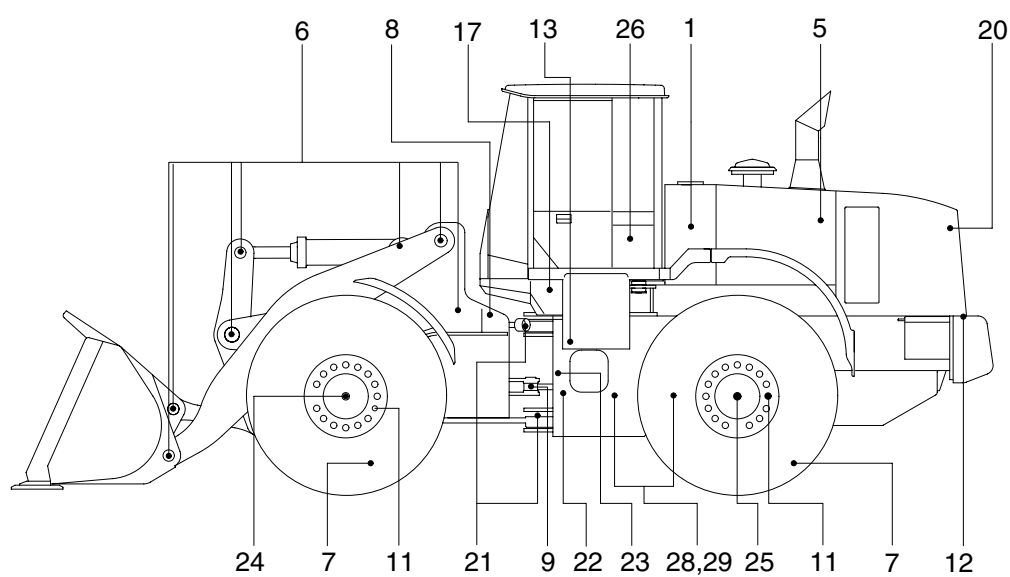
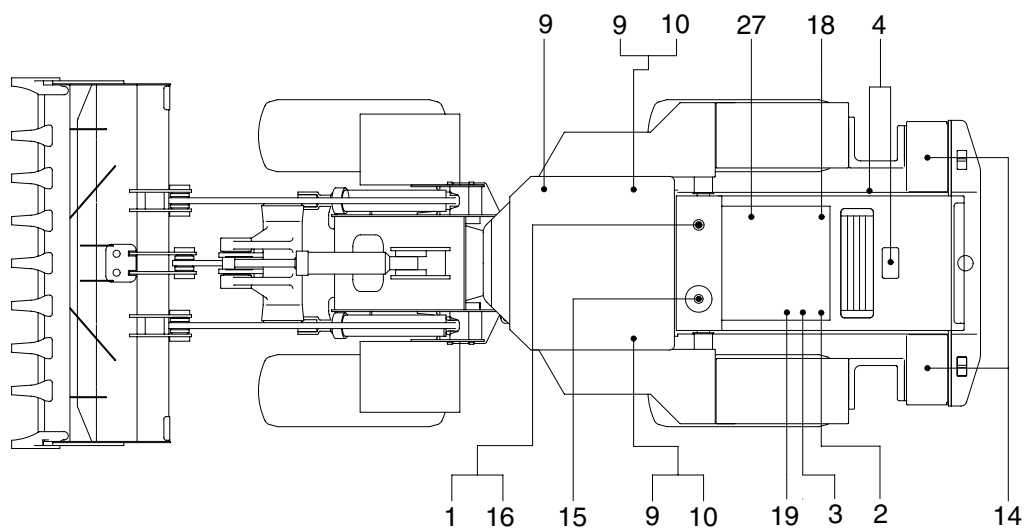
Check items	Service	Page
Hydraulic oil *2	Change	6-27

*2 Hyundai genuine long life hydraulic oil

10) WHEN REQUIRED

Check items	Service	Page
Air cleaner element		
· Safety	Replace	6-23
· Primary	Check, Clean, Replace	6-23
Air conditioner and heater		
· Inner filter	Replace	6-44
· Outer filter	Check, Clean, Replace	6-44

5. MAINTENANCE CHART



7809S6M110

Caution

1. Service intervals are based on the hour meter reading.
2. The number of each item shows the lubrication point on the machine.
3. Stop engine while filling oil, and use no open flames.
4. For other details, refer to the service manual.

Service interval	No.	Description	Service action	Oil symbol	Capacity l (U.S.gal)	Service points No.
10 Hours or daily	1	Hydraulic oil level	Check, Add	HO	203 (53.6)	1
	2	Engine oil level	Check, Add	EO	38 (10.0)	1
	4	Radiator coolant level	Check, Add	C	65 (17.2)	1
	5	Fan belt tension & damage	Check, Adjust	-	-	2
50 Hours or weekly	6	Attachment pins	Lubricate	PGL	-	13
	7	Tire (air)	Check, Add	-	-	4
	8	Drive shaft (flange bearing)	Lubricate	PGL	-	2
	9	Steering cylinder pin	Lubricate	PGL	-	4
	10	Rear axle pivot	Lubricate	PGL	-	2
	28	Drive shaft (center)	Lubricate	PGL	-	2
	29	Drive shaft (rear, upper)	Lubricate	PGL	-	6
250 Hours	2	Engine oil	Change	EO	38 (10.0)	1
	3	Engine oil filter	Replace	-	-	1
	11	Wheel nuts	Check, Tight	-	-	92
	12	Fuel tank (water, sediment)	Drain	-	450 (118.8)	1
	13	Brake line filter (strainer)	Check, Clean	-	-	1
	14	Battery (voltage)	Check, Add	-	-	2
	15	Hydraulic oil return filter (-#0259)	Replace	-	-	1
	16	Hydraulic tank air breather element	Replace	-	-	1
	17	Pilot line filter element	Replace	-	-	1
	26	Air conditioner and heater outer filter	Check, Clean	-	-	1
500 Hours	18	Fuel filter element	Replace	-	-	2
	19	Coolant filter (corrosion resistor)	Replace	-	-	1
	19	Coolant test (DCA4 concentration)	Test, Add	DCA4	-	1
	20	Radiator, oil cooler, charge air cooler	Clean	-	-	3
	27	Air cleaner element (primary)	Clean	-	-	1
1000 Hours	15	Hydraulic oil return filter (#0260-)	Replace	-	-	1
	21	Center pivot pin	Lubricate	PGL	-	2
	22	Transmission oil	Change	EO	43 (11.4)	1
	23	Transmission oil filter	Replace	-	-	2
	26	Air conditioner and heater outer filter	Replace	-	-	1
1500 Hours	24	Axle oil (front)	Change	UTTO	58 (15.3)	3
	25	Axle oil (rear)	Change	UTTO	58 (15.3)	3
2000 Hours	1	Hydraulic oil *1	Change	HO	203 (53.6)	1
	4	Radiator coolant	Change	C	65 (17.2)	1
	-	Hoses, fittings, clamps (fuel, coolant, hydraulic)	Check, Retighten, Replace	-	-	-
5000 Hours	1	Hydraulic oil *2	Change	HO	203 (53.6)	1
When required	26	Air conditioner and heater inner filter	Replace	-	-	1
		Air conditioner and heater outer filter	Clean, Replace	-	-	1
	27	Air cleaner element (safety and primary)	Clean, Replace	-	-	2

*1 Conventional hydraulic oil *2 Hyundai genuine long life hydraulic oil

※ **Oil symbol**

Refer the recommended lubricants for specification.

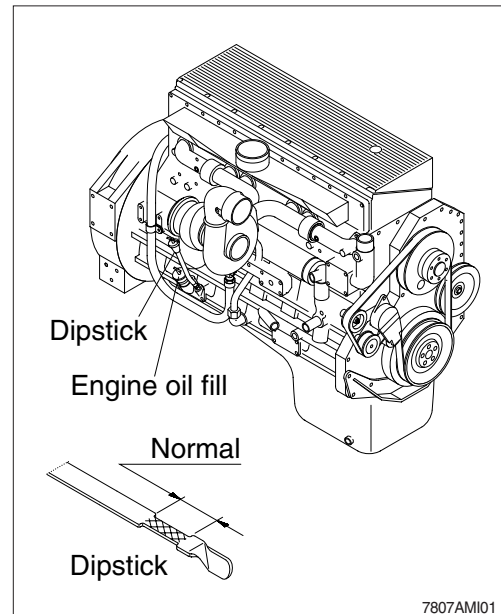
- EO : Engine oil
- HO : Hydraulic oil
- GO : Gear oil
- PGL : Grease
- C : Coolant
- UTTO : Refer to the page 6-9.

6. SERVICE INSTRUCTION

1) CHECK ENGINE OIL LEVEL

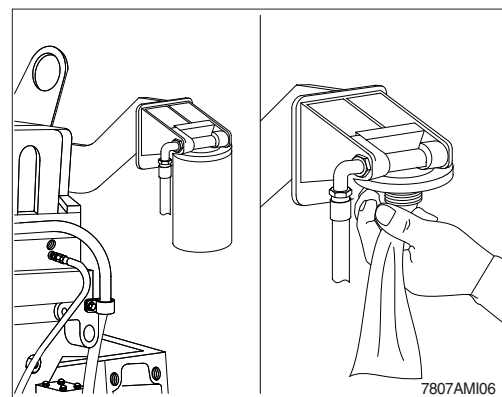
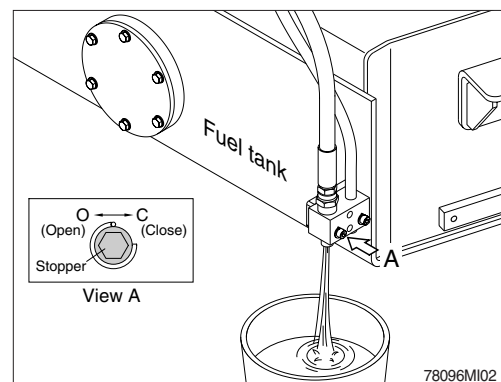
Check the oil level with the machine on a flat ground before starting engine.

- (1) Pull out the dipstick and wipe with a clean cloth.
 - (2) Check the oil level by inserting the dipstick completely into the hole and pulling out again.
 - (3) If oil level is LOW, add oil and then check again.
- ※ If the oil is contaminated or diluted, change the oil regardless of the regular change interval.
 - ※ Check oil level after engine has been stopped for 15 minutes.
 - ▲ Do not operate unless the oil level is in the normal range.



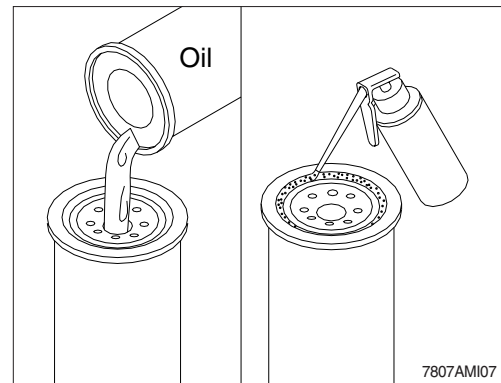
2) REPLACEMENT OF ENGINE OIL AND OIL FILTER

- (1) Operate the engine until the coolant temperature reaches 60°C (140°F). Shut off the engine.
 - (2) Turn the stopper to open position and allow the oil to drain.
 - Wrench size : 10 mm
 - ※ A drain pan with a capacity of 40 liters (10.6 U.S.gallons) will be adequate.
- (3) Clean the area around the oil filter head.
 - (4) Use oil filter wrench to remove the oil filter.
 - (5) Clean the gasket surface of oil filter head.
 - ※ The O-ring can stick on the filter head; make sure it is removed.



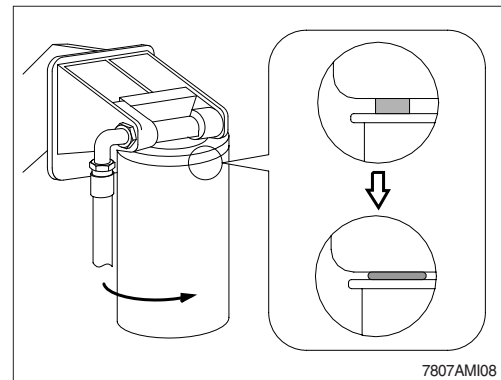
(6) Apply a light film of lubricating oil to the gasket sealing surface before installing the filter.

※ **Fill the filter with clean lubricating oil.**

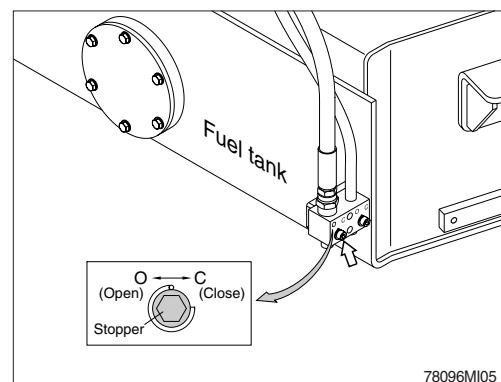


(7) Install the filter to the filter head.

※ **Mechanical over-tightening may distort the threads or damage the filter element seal.**

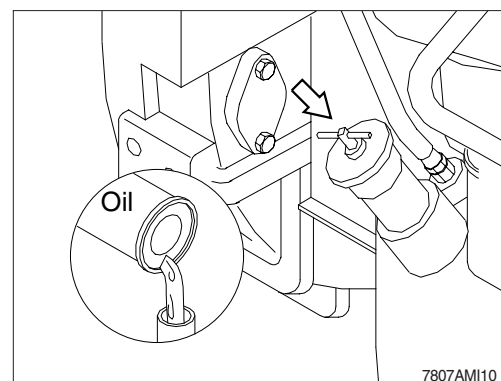


(8) Turn the stopper to the close position.



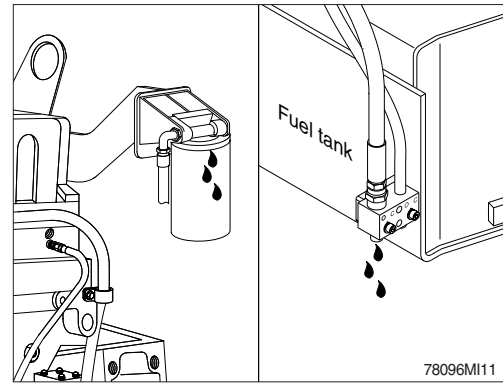
(9) Fill the engine with clean oil to the proper level.

• Quantity : 38 l (10 U.S.gallons)



- (10) Operate the engine at low idle and inspect for leaks at the filter and the drain plug. Shut the engine off and check oil level with dipstick. Allow 15 minutes for oil to drain down before checking.

※ **Do not overfill the engine with oil.**

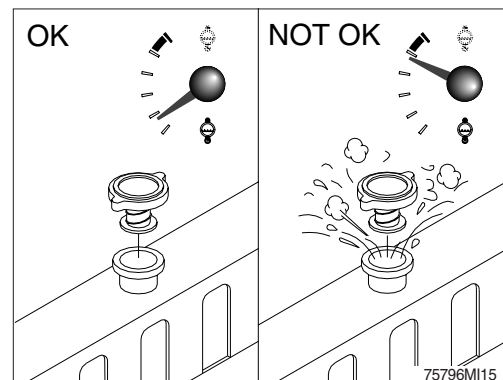
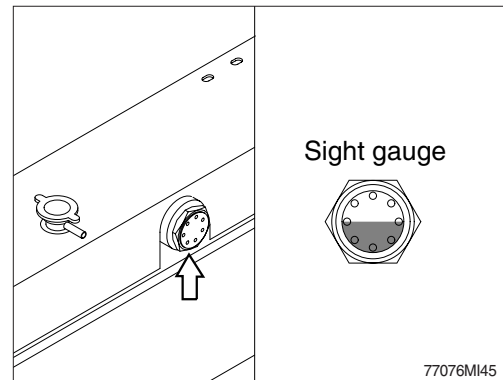


3) CHECK COOLANT LEVEL

- (1) Check the coolant level at the sight gauge.
- (2) Add the mixture of antifreeze and water if coolant is not sufficient.
- (3) The sight gauge should indicate the middle position.
- (4) Replace gasket of radiator cap when it is damaged.

▲ **Do not remove the radiator cap from a hot engine. Wait until the coolant temperature is below 50°C (120°F) before removing the radiator cap. Heated coolant spray or steam can cause personal injury.**

※ **Do not add cold coolant to a hot engine ; engine castings can be damaged. Allow the engine to cool to below 50°C (120°F) before adding coolant.**



4) FLUSHING AND REFILLING OF RADIATOR

(1) Change coolant

- ⚠ Avoid prolonged and repeated skin contact with used antifreeze. Such prolonged repeated contact can cause skin disorders or other bodily injury.

Avoid excessive contact-wash thoroughly after contact.

Keep out of reach of children.

- ⚠ Protect the environment : Handling and disposal of used antifreeze can be subject to federal, state, and local law regulation.

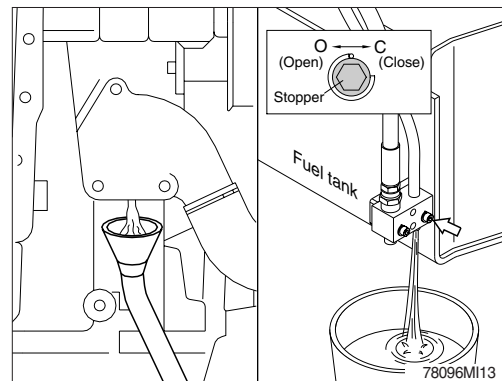
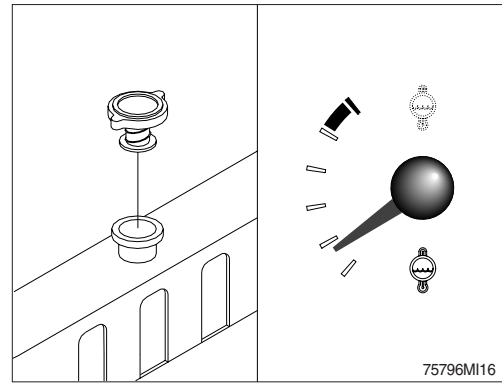
Use authorized waste disposal facilities, including civic amenity sites and garages providing authorized facilities for the receipt of used antifreeze.

If in doubt, contact your local authorities for guidance as to proper handling of used antifreeze.

- ⚠ Wait until the temperature is below 50°C (120°F) before removing the coolant system radiator cap. Failure to do so can cause personal injury from heated coolant spray.

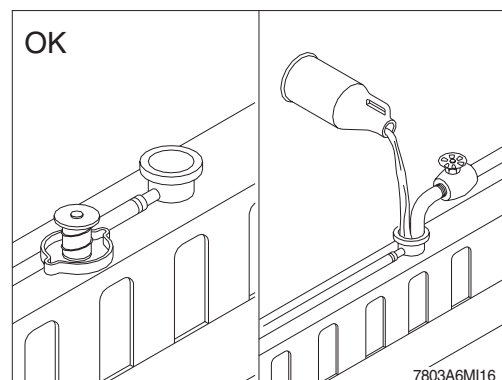
Drain the cooling system by turning the stopper to the open position.

A drain pan with a capacity of 70 liters (18.5 U.S.gallons) will be adequate in most applications.

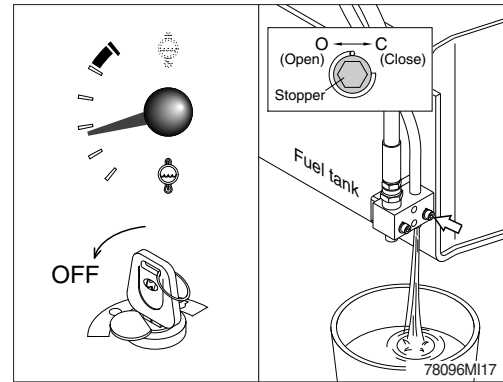


(2) Flushing of cooling system

- ① Fill the system with a mixture of sodium carbonate and water (or a commercially available equivalent).
- ※ Use 0.5 kg (1.0 pound) of sodium carbonate for every 23 liters (6.0 U.S. gallons) of water.
- ※ Do not install the radiator cap. The engine is to be operated without the cap for this process.

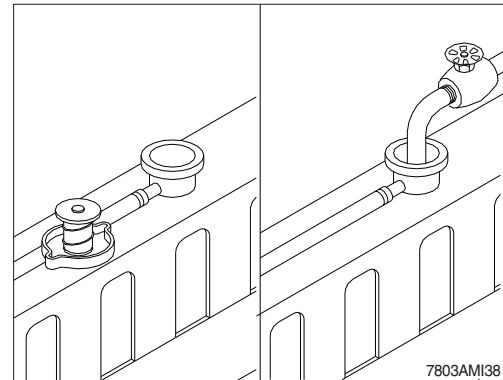


- ② Operate the engine for 5 minutes with the coolant temperature above 80°C (176°F). Shut the engine off, and drain the cooling system.



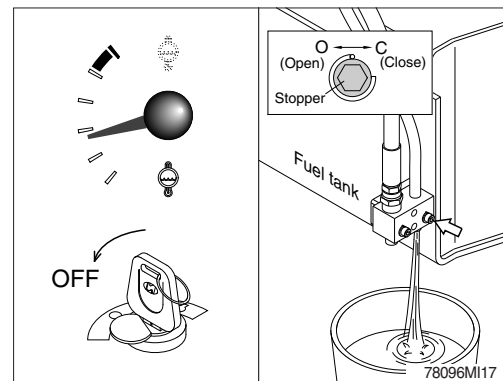
- ③ Fill the cooling system with clean water.

- ※ Be sure to vent the engine and aftercooler for complete filling.
- ※ Do not install the radiator cap or the new coolant filter.



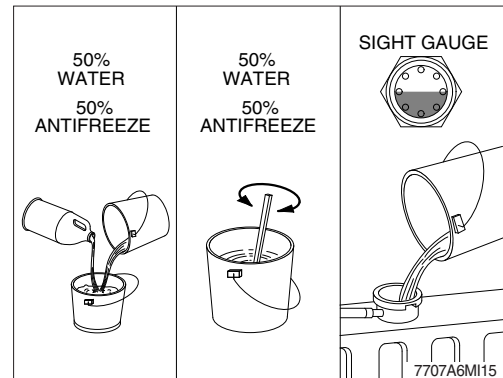
- ④ Operate the engine for 5 minutes with the coolant temperature above 80°C(176°F). Shut the engine off, and drain the cooling system.

- ※ If the water being drained is still dirty, the system must be flushed again until the water is clean.

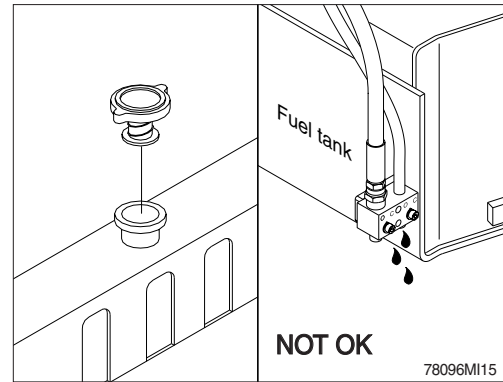


(3) Cooling system filling

- ① Use a mixture of 50 percent soft water and 50 percent ethylene glycol antifreeze to fill the cooling system. Refer to the page 6-9.
- ※ Never use water alone for coolant. This can result in damage from corrosion.
 - ※ Do not use hard water such as river water or well water.



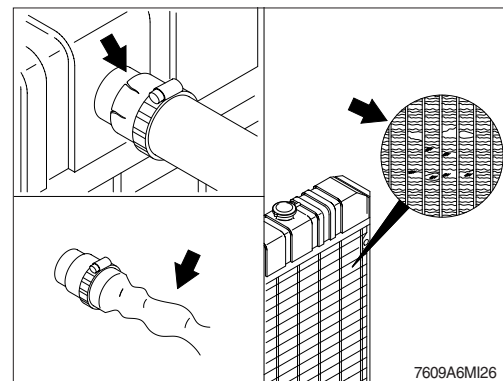
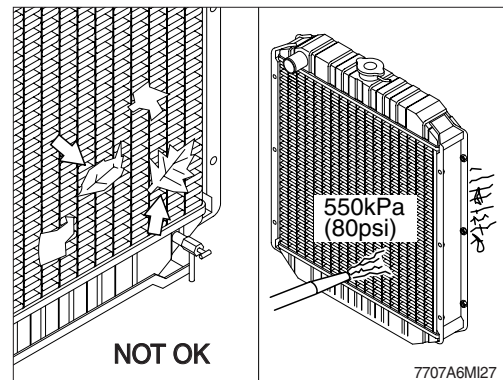
- ② Install the radiator cap. Operate the engine until it reaches a temperature 80°C (176°F), and check for coolant leaks. Check the coolant level again to make sure the system is full of coolant.



5) CLEAN RADIATOR AND OIL COOLER

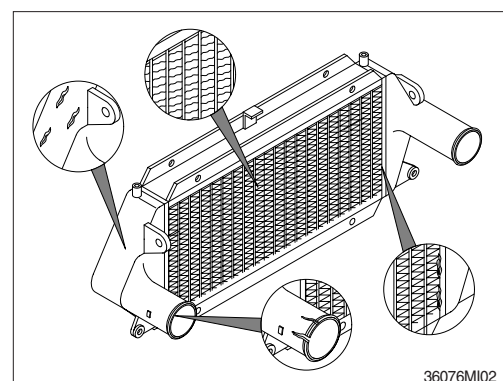
Check, and if necessary, clean and dry outside of radiator and oil cooler. After working in a dusty place, clean radiator more frequently.

- (1) Visually inspect the radiator for clogged radiator fins.
- (2) Use 550 kPa (80 psi) air pressure to blow the dirt and debris from the fins.
Blow the air in the opposite direction of the fan air flow.
- (3) Visually inspect the radiator for bent or broken fins.
※ **If the radiator must be replaced due to bent or broken fins which can cause the engine to overheat, refer to the manufacturer's replacement procedures.**
- (4) Visually inspect the radiator for core and gasket leaks.



6) CHECK CHARGE AIR COOLER

- (1) Inspect the charge air cooler for dirt and debris blocking the fins. Check for cracks, holes, or other damage. If damage is found, please contact hyundai distributor.



6-1) COOLANT TEST STRIPS INSTRUCTIONS

(1) Pre-test instruction

Recommended testing frequency - at every coolant filter change interval.

- ① Collect coolant sample from the radiator drain valve.
 - Do not collect from the coolant recovery or overflow system
 - Coolant must be between 10~54°C when tested
 - Room temperature is best.
- ② For accurate results, test must be completed within 75 seconds.
 - Follow recommended test times. Use a stopwatch.
- ③ Record and track results.

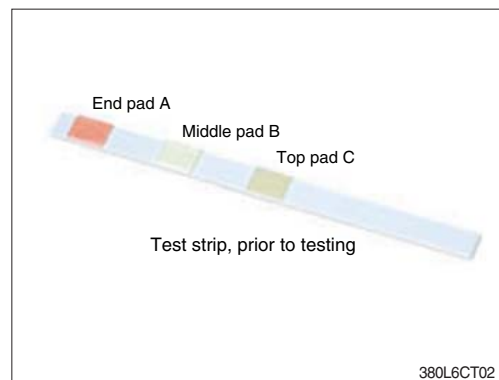


380L6CT01

(2) Test instruction

- ① Remove one strip from bottle and replace cap immediately.

Do not touch the pads on the end of the strip. Discard kit if nitrite test pads of unused strips have turned brown.
- ② Dip strip for 1 second in coolant sample, remove, and shake strip briskly to remove excess liquid.



380L6CT02

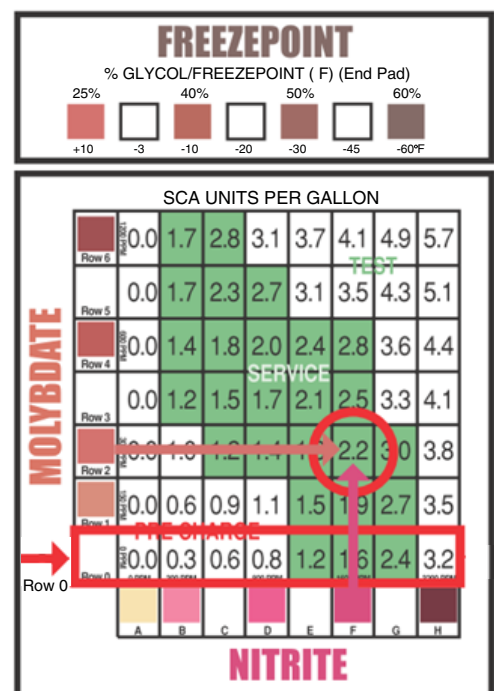
- ③ 45 seconds after dipping strip, compare results to color chart and record in the following order:

for DCA4:



- ④ All three readings must be completed no later than 75 seconds after dipping strip.
- ⑤ If uncertain about the color match, pick the low numbered block.

ex.) If nitrite color is not F, use column E.
- ⑥ Determine where the molybdate level intersect the nitrite level on the chart. The amount of SCA units per gallon in the cooling system is given where the molybdate row intersect the nitrite column.



380L6CT03

(3) Maintenance actions based on results

① Above normal

ABOVE NORMAL

- Do not replace the coolant filter or add DCA4 liquid until additive concentration falls below 3 units per gallon.
- Test at every subsequent coolant filter change interval.

② Normal

NORMAL

- Continue to replace the coolant filter at your normal interval.

③ Below normal

BELOW NORMAL

- Replace the coolant filter and add 1 pint of additive per each 4 gallons of coolant.
- Replace the coolant filter and add 40 cc of additive per each 1 liter of coolant.

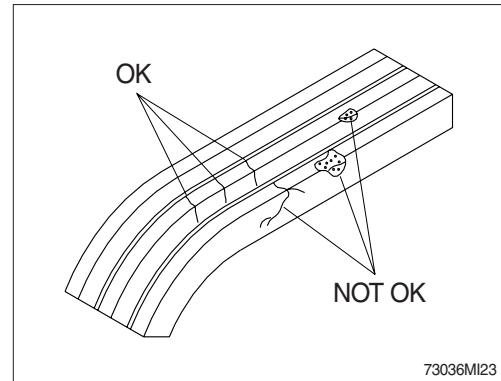
※ If you need part number of Test kit or DCA4, please see Parts Manual.

0.0	1.7	2.8	3.1	3.7	4.1	4.9	5.7
0.0	1.7	2.3	2.7	3.1	3.5	4.3	5.1
0.0	1.4	1.8	2.0	2.4	2.8	3.6	4.4
0.0	1.2	1.5	1.7	2.1	2.5	3.3	4.1
0.0	1.0	1.2	1.4	1.8	2.2	3.0	3.8
0.0	0.6	0.9	1.1	1.5	1.9	2.7	3.5
0.0	0.3	0.6	0.8	1.2	1.6	2.4	3.2

380L6CT04

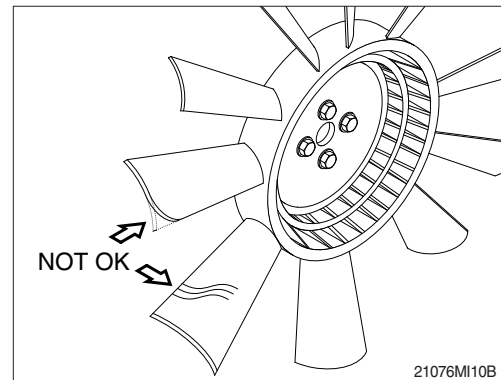
7) DRIVE BELT

- (1) Inspect the belts daily. Check the belts for intersecting cracks. Transverse (across the belt width) cracks are acceptable. Longitudinal (direction of belt length) cracks that intersect the transverse cracks are not acceptable. Replace a belt if it is frayed or has pieces of material missing.



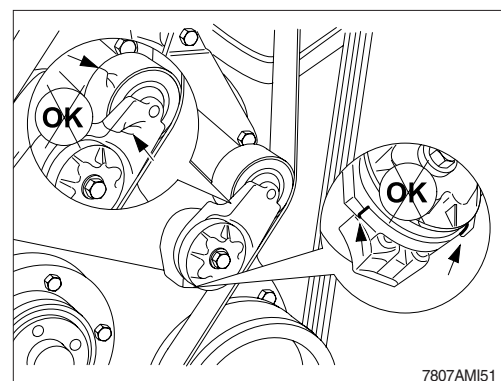
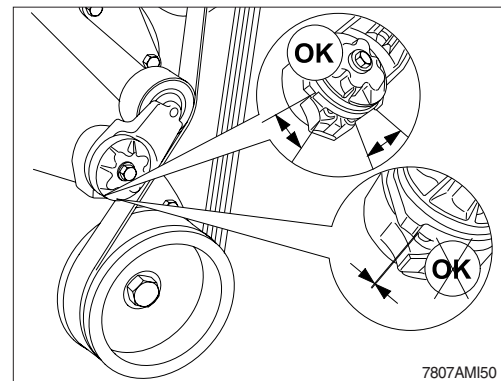
8) INSPECTION OF COOLING FAN

- ⚠ Personal injury can result from a fan blade failure. Never pull or pry on the fan. This can damage the fan blade and cause fan failure.
- ※ Rotate the crankshaft by using the engine barring gear.
 - ※ A visual inspection of the cooling fan is required daily.
- Check for cracks, loose rivets, and bent or loose blades.
- Check the fan to make sure it is securely mounted. Tighten the capscrews if necessary.
- Replace any fan that is damaged.

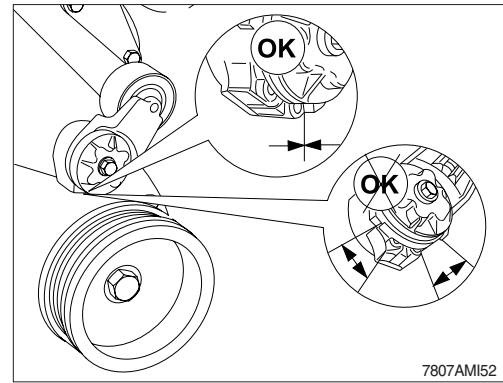


9) BELT TENSIONER, AUTOMATIC ADJUSTMENT

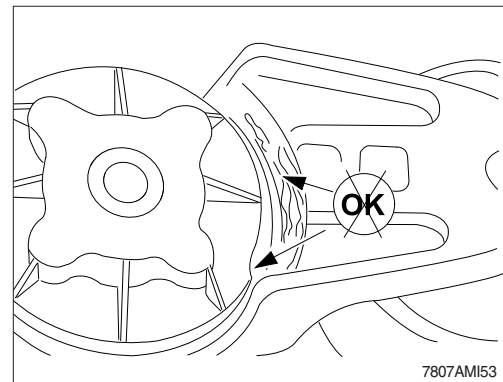
- (1) Every 1000hours, or 1 year, whichever occurs first, inspect the automatic belt tensioner.
- With the engine turned off, check that neither the top nor bottom tensioner arm stop is touching the cast boss on the tensioner body. If either of the stops is touching a boss, the alternator belt must be replaced. Check to make sure the correct belt part number is being used if either condition exists.
- (2) Check the tensioner pulley and body for cracks.
- If any cracks are noticed, the tensioner must be replaced. Refer to a Cummins Authorized Repair facility. Check the tensioner for dirt buildup. If this condition exists, the tensioner must be removed and steam-cleaned.



- (3) Check that the bottom tensioner arm stop is in contact with the bottom tensioner arm stop boss on the tensioner body. If these two are not touching, the tensioner must be replaced.



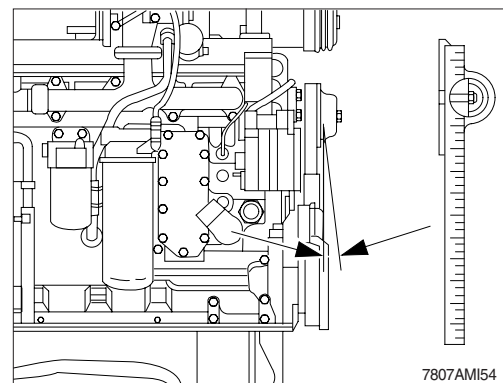
- (4) Inspect the tensioner for evidence of the pivoting tensioner arm contacting the stationary circular base. If there is evidence of these two areas touching, the pivot tube bushing has failed and the tensioner must be replaced.



- (5) A worn tensioner that has play in it or a belt that “walks” off its pulley possibly indicates pulley misalignment.

※ **Maximum pulley misalignment is three degrees. This measurement can be taken with a straightedge and an inclinometer.**

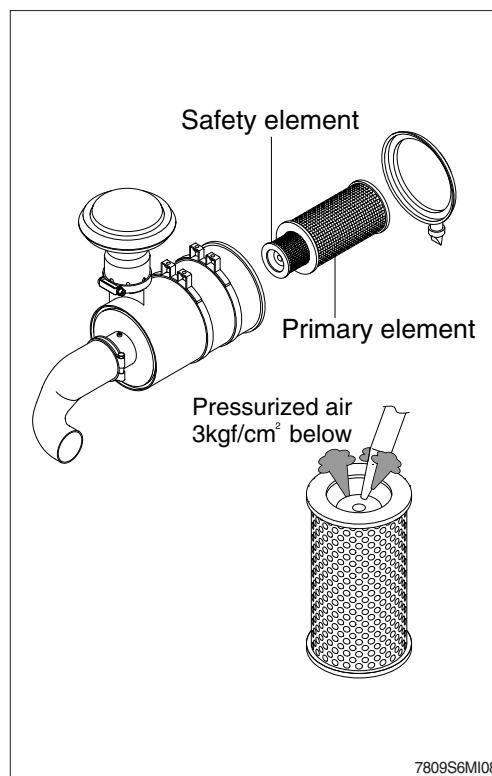
- (6) Install the belt.



10) CLEANING OF AIR CLEANER

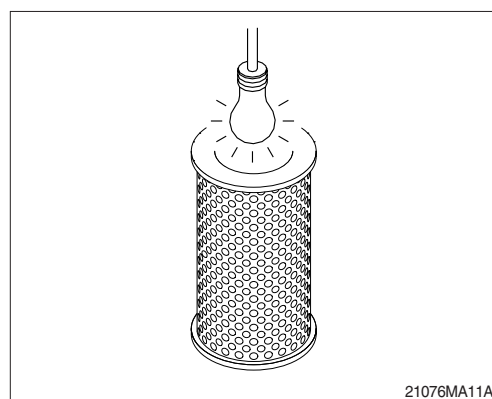
(1) Primary element

- ① Loosen the wing nut and remove the element.
 - ② Clean the inside of the body.
 - ③ Clean the element with pressurized air.
 - Remove the dust inside of the element by the pressurized air (below 3kgf/cm², 40 psi) forward and backward equally.
 - ④ Inspect for cracks or damage of element by putting a light bulb inside of the element.
 - ⑤ Insert element and tighten wing nut.
- ※ **When the air cleaner warning lamp is ON, clean the primary element.**
 - ※ **The primary element should be replaced if the warning lamp is ON after installation of a clean primary element, or if the exhaust smoke is still black.**
 - ※ **Replace the primary element after 4 times cleanings.**



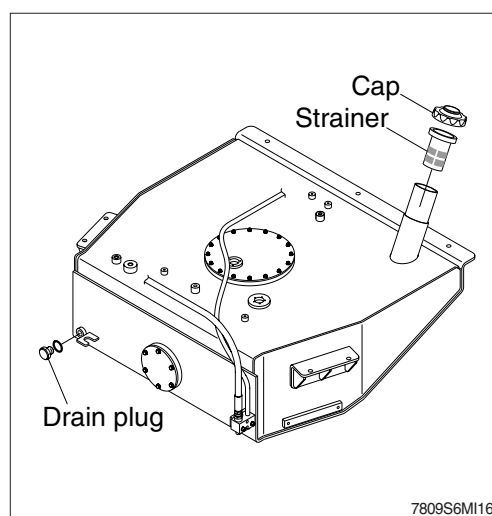
(2) Safety element

- ※ **The safety element should be replaced at the time the primary element is replaced.**
- ※ **Always replace the safety element. Never attempt to reuse the safety element by cleaning the element.**



11) FUEL TANK

- (1) Fill fuel fully when system the operation to minimize water condensation, and check it with fuel gauge before starting the machine.
 - (2) Drain the water and sediment in the fuel tank by opening the plug.
- ※ **Be sure to LOCK the cap of fuel tank.**
 - ※ **Remove the strainer of the fuel tank and clean it if contaminated.**
Stop the engine when refueling.
 - ▲ **All lights and flames shall be kept at a safe distance while refueling.**



12) FUEL WATER SEPARATOR

※ **Drain the fuel water separator into a container, and dispose of contents in accordance with local environmental regulations.**

(1) Drain the water and sediment from the separator daily. Shut off the engine.

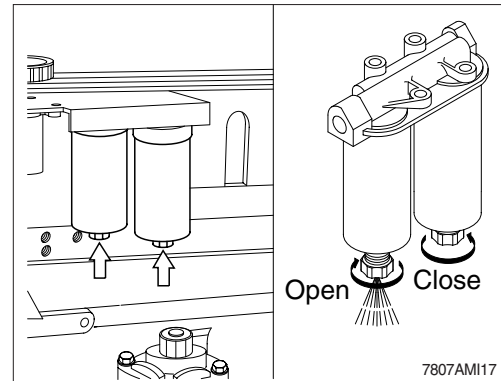
(2) Use your hand to open the drain valve.

(3) Turn the valve counterclockwise approximately 3 1/2 turns until the valve drops down 25.4 mm (1 inch) and draining occurs.

(4) Drain the filter sump until clear fuel is visible.

※ **When closing the drain, do not overtighten the valve. Overtightening can damage the threads.**

(5) To close the valve, lift the valve and turn clockwise until it is hand-tight.



13) REPLACEMENT OF FUEL FILTER

(1) Clean the area around the fuel filter and fuel filter head.

(2) Remove the fuel filter with filter wrench.

(3) Replace the sealing ring.

(4) Lubricate the fuel filter gasket with clean engine oil.

(5) Fill the new filter with clean diesel fuel.

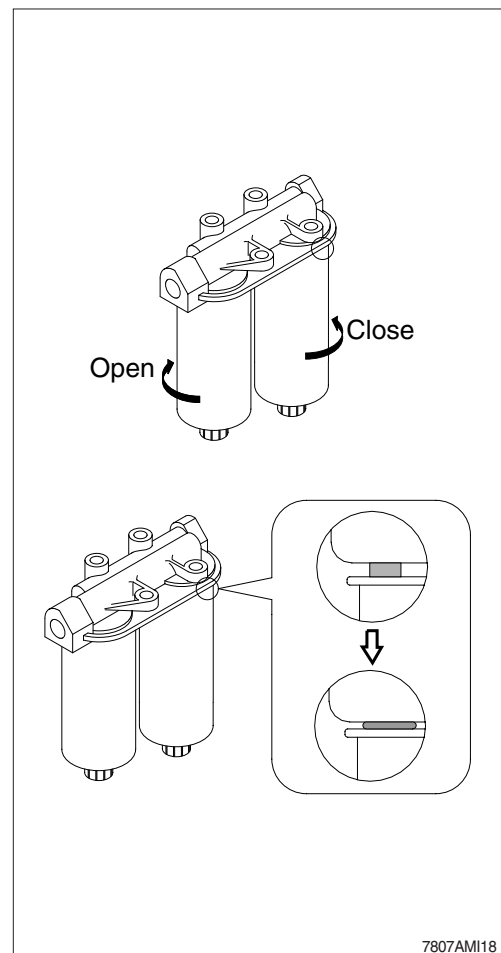
(6) Install the filter on the filter head.
Turn the filter until the gasket contacts the filter head surface.

(7) Tighten the filter, by hand, an additional 1/2 to 3/4 of a turn after gasket contacts the filter head surface.

※ **If the filter canister is damaged in any way, do not use it. Dents or scrapes can lead to a rupture or premature failure of the filter.**

※ **Mechanical overtightening of filter can distort the threads and damage the fuel filter seal.**

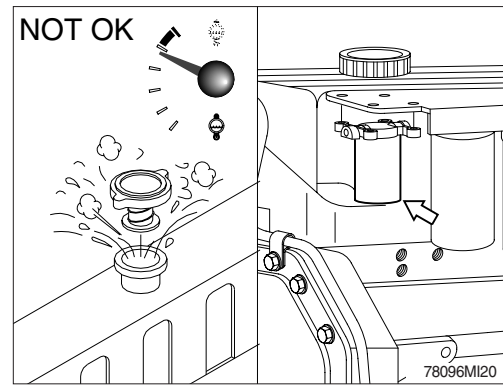
※ **Check for fuel leakage after the engine starts.**



14) COOLANT FILTER (CORROSION RESISTOR)

- ⚠ Do not remove the radiator cap from a hot engine. Wait until the coolant temperature is below 50°C (120°F) before removing the radiator cap. Heated coolant spray or steam can cause personal injury

(1) Remove the radiator cap.

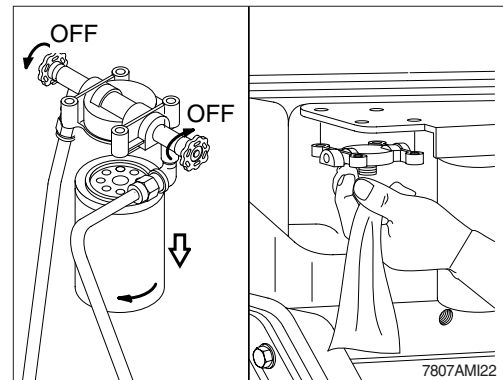


(2) Turn the valve to the OFF position.

(3) Remove and discard the filter.

Clean the coolant filter head gasket's surface.

- ⚠ A small amount of coolant can leak when servicing the filter with the shutoff valve in the OFF position. To avoid personal injury, avoid contact with hot coolant.



(4) Apply a thin film of clean engine oil to the gasket sealing surface before installing the new filter.

- ※ If the filter canister is damaged in any way, do not use it. Dents or scrapes can lead to a rupture or premature failure of the filter.

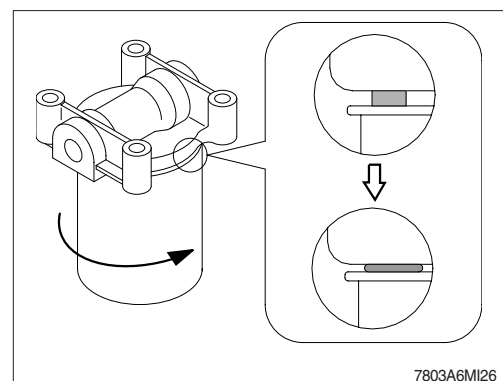


(5) Install a new filter on the filter head.

Tighten the filter until the gasket contacts the filter head surface.

(6) Tighten the filter an additional 1/2 to 3/4 of a turn.

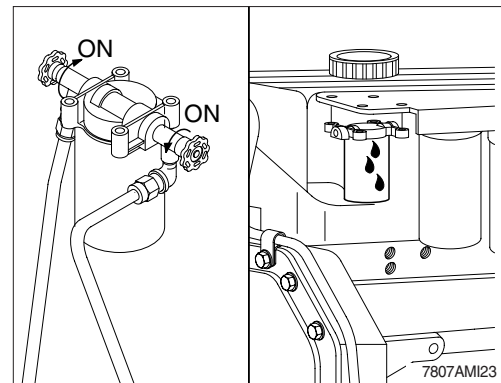
- ※ Mechanical over tightening can distort the filter threads or damage the filter head.



(7) Turn the valve to the ON position, and install the radiator cap.

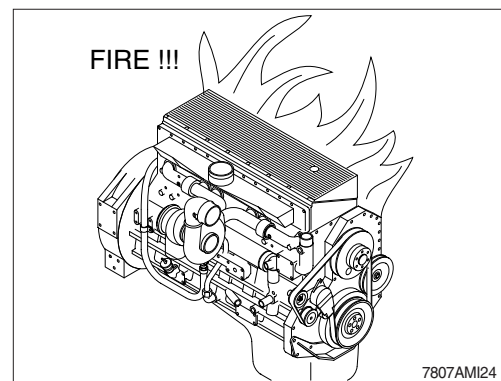
(8) Operate the engine and check for leaks.

※ The valve must be in the ON position to prevent engine damage.



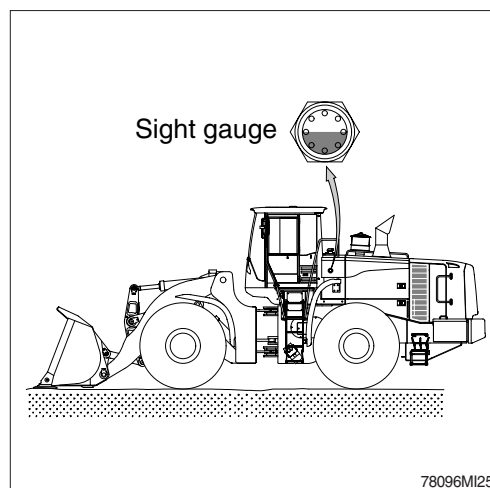
15) LEAKAGE OF FUEL

▲ Be careful and clean the fuel hose, injection pump, fuel filter and other connections as the leakage from these part can cause fire.



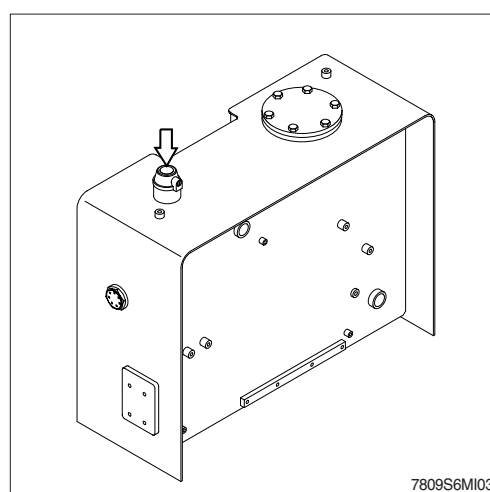
16) HYDRAULIC OIL CHECK

- (1) Lower the bucket on the ground at a flat location as in the illustration.
Stop the engine and then leave for about 5 minutes.
 - (2) Check the oil level at the sight gauge. The sight gauge is located on the left side of the hydraulic oil tank.
 - (3) The sight gauge should indicate the middle position.
- ※ **Add hydraulic oil, if necessary.**



17) FILLING HYDRAULIC OIL

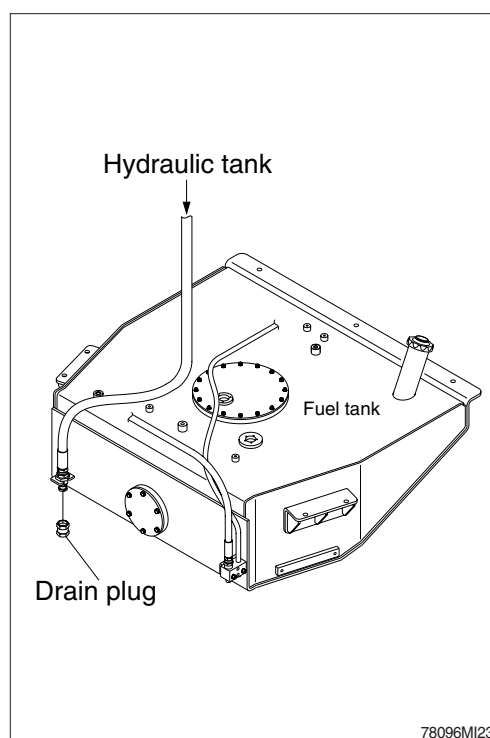
- (1) Stop the engine to the position of level check.
- (2) Relieve the pressure in the tank by pushing the top of the air breather.
- (3) Remove the breather on the top of oil tank and fill the oil to the specified level.
- (4) Start engine after filling and operate the work equipment several times.
- (5) Check the oil level at the level check position after engine stops.



18) CHANGE THE HYDRAULIC OIL

- (1) Lower the bucket on the ground extend the bucket cylinder to the maximum.
- (2) Relieve the pressure in the tank by pushing the top of the breather.
- (3) Prepare a suitable container.
- (4) To drain the oil loosen the drain plug at the fuel tank block.
- (5) Tighten the drain plug.
- (6) Fill proper amount of recommended oil.
- (7) Put the breather in the right position.
- (8) Start engine and run continually. Release the air by full stroke of control lever.

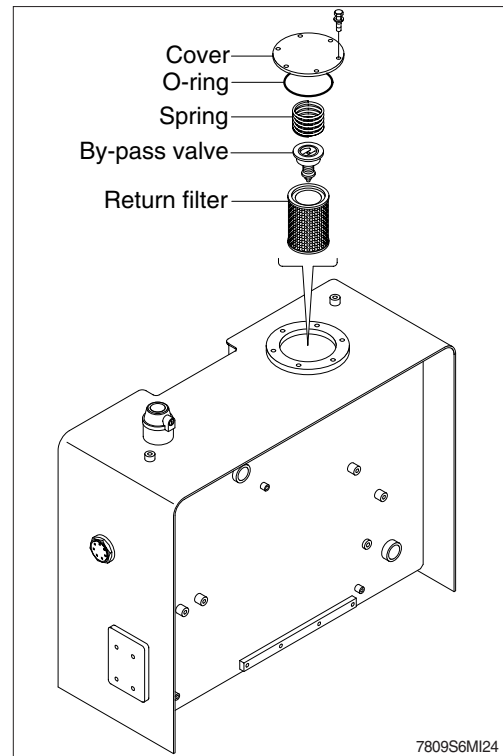
※ **The oil must be free of bubbles. If bubbles are present in the oil, air is entering the hydraulic system. Inspect the suction hoses and hose clamps.**



19) CLEANING AND REPLACING RETURN FILTER

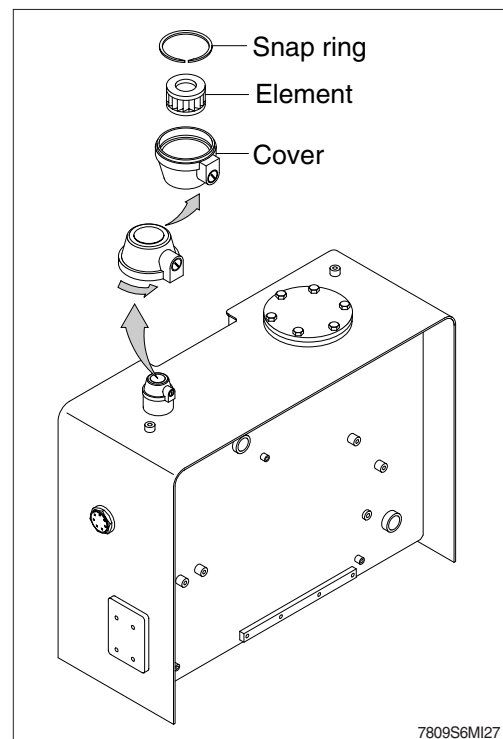
Clean and replace the return filter in the following manner.

- (1) Remove the cover.
- (2) Remove spring, by-pass valve and return filter from the tank.
- (3) Replace element with new one and assemble spring and by-pass valve after cleaning.
- (4) Install the cover on the tank.
 - Tightening torque : $6.9 \pm 1.4 \text{ kgf} \cdot \text{m}$ ($50 \pm 10 \text{ lbf} \cdot \text{ft}$)



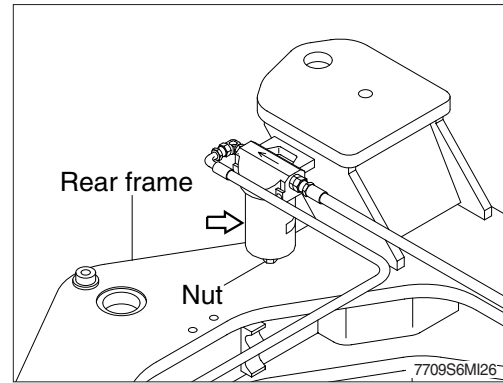
20) REPLACEMENT OF ELEMENT IN HYDRAULIC TANK BREATHER

- (1) Relieve the pressure by pushing the top of the breather.
- (2) Remove the cover
- (3) Remove the snap ring and pull out the filter element.
- (4) Replace the filter element with new one.
- (5) Apply oil on the O-ring and reassemble by reverse order of disassembly.
 - Tightening torque : $0.7 \sim 0.9 \text{ kgf} \cdot \text{m}$ ($5 \sim 6 \text{ lbf} \cdot \text{ft}$)



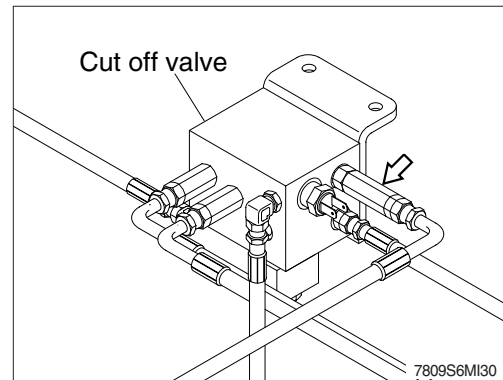
21) REPLACE OF PILOT LINE FILTER

- (1) Loosen the nut positioned on the filter body.
- (2) Pull out the filter element and clean filter housing.
- (3) Install the new element and tighten the nut.



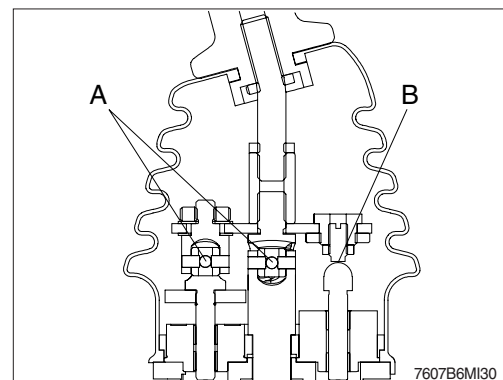
22) CLEANING OF BRAKE LINE FILTER

- (1) Remove the strainer from the filter body.
- (2) Wash the strainer with cleaning oil.
- (3) Install and tighten using specified torque.
 - Tightening torque : 6~8 kgf · m
(43.4~57.9 lbf · ft)



23) LUBRICATE RCV LEVER

Remove bellows and grease the joint (A) and the sliding parts (B).



24) TIRE PRESSURE

(1) Inappropriate tire pressure is a primary cause for tire damage. Insufficient tire pressure will damage internal carcass of tire. Repeated excessive bending will damage or break the carcass. Excessive pressure will also cause premature damage of tire.

(2) Recommended tire pressure (when tire is cooled)

Size	Pressure
29.5 × 25, 22PR (L3)	3.5bar (50psi)

(3) Continuous operation will produce heat and increase pressure on tire. But such phenomenon was already taken into account when designing a tire. Do not try to remove normally increased air because tires may be crushed or overinflated.

(4) The three major causes for excessive heat and pressure of tire are insufficient pressure, excessive load and overspeed. Avoid excessive load and overspeed in order to keep tires in good shape.

▲ Do not inflate tires using flammable gases or alcohol injector.

▲ This cause explosion or personal injury.
Inflate tires at the pressure level recommended by the manufacturer, and check periodically pressure and wear of tires.

▲ When replacing the inflated tire, do not stand near the tire. Contact a tire repair shop.

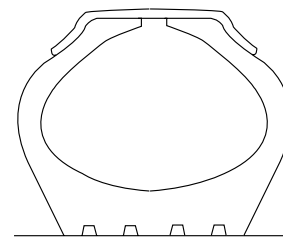
※ Check the tire when the tire is at normal temperature and the machine is not loaded.

▲ Do not use recycled wheel parts.

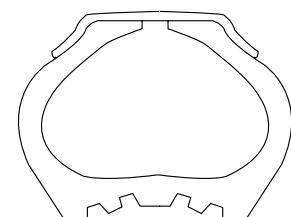
▲ When removing lockering or inflating tire, use safety cable or chain to ensure safety.
Be sure to bleed air before removing lockering. Never inflate tires unless the lockering is assembled in its place.

※ Avoid the followings when traveling.

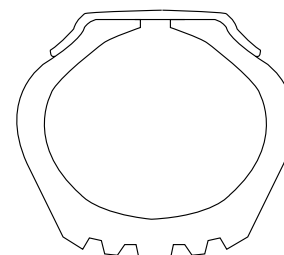
- ① Rubbing tires against road bank or rack at cargo-unloading spot.
- ② Tires slippage during working.
- ③ Abrupt starting of machine.
- ④ When oil, grease or gasoline smeared on tire, clean those. Otherwise it may cause of permanent deformation.



Normal



Too low pressure



Excess pressure

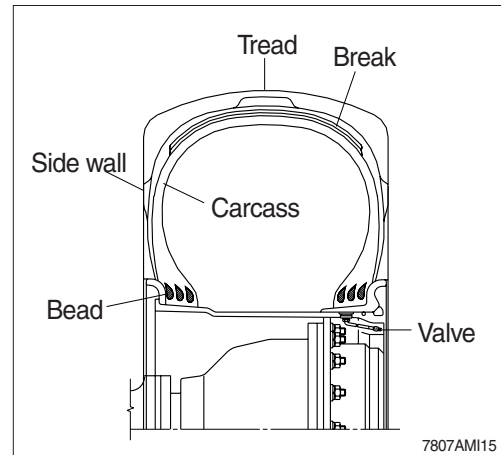
73036MI10

25) REPLACEMENT OF TIRE

▲ Disassembly, reassembly, replacement and repair of tire requires special skills and equipment. Contact a tire repair shop.

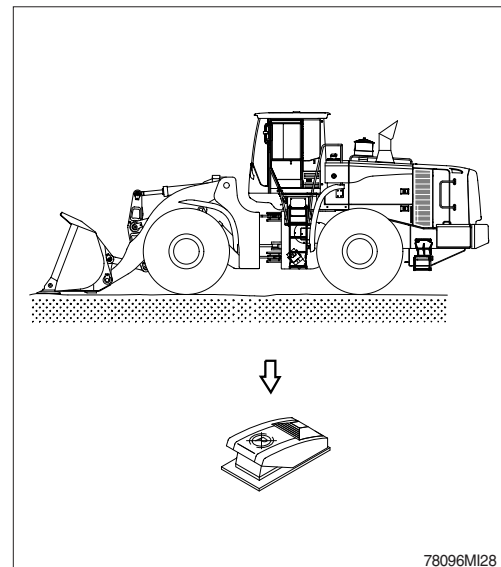
(1) Tires to be replaced

- ① Tires with broken or bent bead wires
- ② Tires exposed more than 1/4 of carcass ply.
- ③ Tires whose carcass is damaged more than 1/3 of the tire width.
- ④ Tires which show fly separation.
- ⑤ Tires which has a radial crack near the carcass.
- ⑥ Tires which are judged to be unsuitable for use because of deformation or damage.

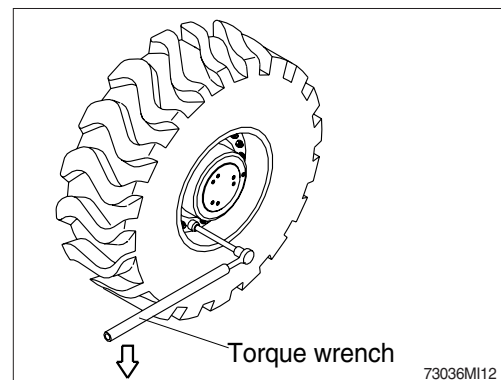


(2) Separation of tire

- ① After moving the machine to flat ground, lower the bucket to the ground and press the parking brake.

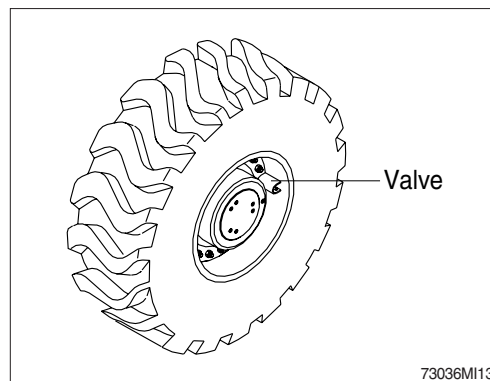


- ② Loosen slightly all wheel mounting.
 - Tools : Socket 32 mm
 - Torque wrench
 - Extension bar
- ③ Lift the machine with a jack.
- ④ Loosen all wheel mounting nuts and replace the tire.



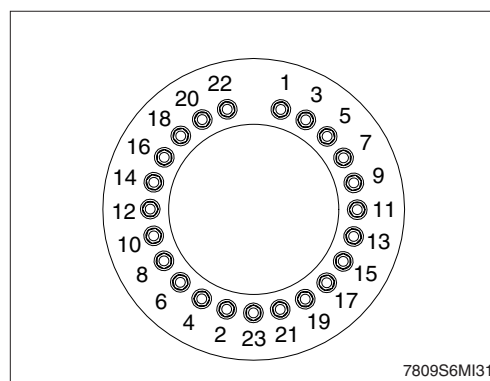
(3) Direction of tire to be installed

- ① Be careful that the valve should be facing the outside.



(4) Mounting of tire

- ① Lightly tighten nuts as shown in the illustration.
- ② Lower the jack after tire is replaced.
- ③ Tighten nuts according to the specified tighten torque.
 - Tightening torque : $79 \pm 2.5 \text{ kgf} \cdot \text{m}$
($571 \pm 18 \text{ lbf} \cdot \text{ft}$)

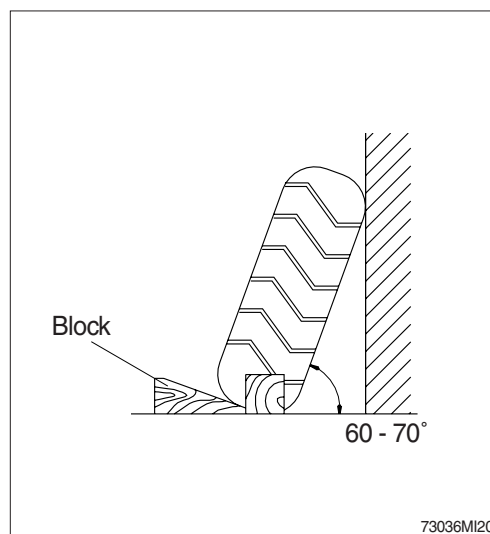


26) STORING TIRES AFTER REMOVAL

As a basic rule, store the tires in a warehouse which unauthorized persons cannot enter. If the tire are stored outside, always erect a fence around the tires and put up "No Entry" and other warning signs that even young children can understand.

Stand the tire on level ground, and block it securely so that it cannot roll or fall over.

If the tire should fall over, get out of the way quickly. The tires for construction equipment are extremely heavy, so trying to hold the tire may lead to serious injury.



27) CHECK TRANSMISSION OIL LEVEL

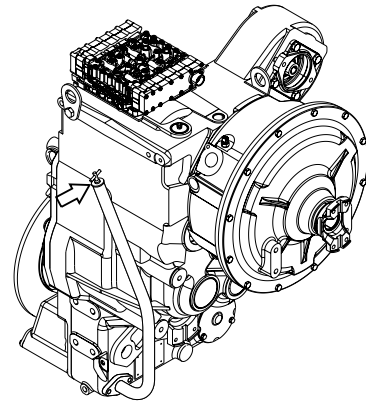
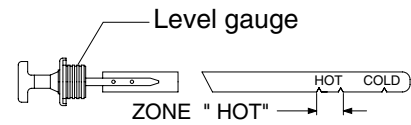
The oil level check must be carried out as follows ;

- (1) Oil level check (weekly).
- (2) Before the oil level check, transmission must have been running to warm up enough.
- (3) When the oil level is checked, machine must be on flat ground and engine must be at idling speed, transmission must be in neutral position.
- (4) Check the oil level with level gauge (dipstick).
- (5) Loosen oil level gauge by counterclock rotation, pull it out and clean it.
- (6) Insert oil level gauge slowly into oil level tube until contact is obtained, and pull it out again.

(7) Oil level

- Operating temperature (about 80~90°C)
: The oil level must be lying in zone HOT.
 - Cold phase (about 40°C)
: The oil level must be lying near cold mark.
- (8) Insert the oil level gauge again and tighten in by clockwise rotation.

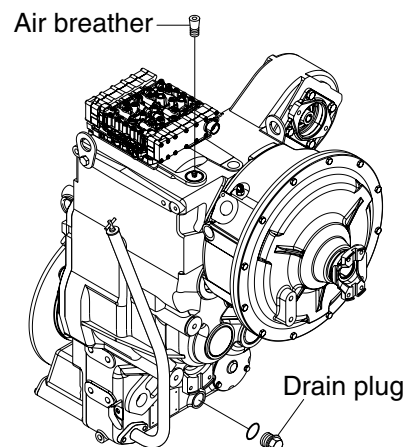
▲ When checking, press the parking brake switch and fix the front and rear frames with the safety lock bar.



78096MI33

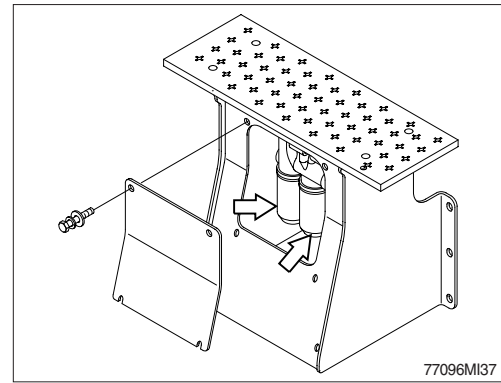
28) REPLACEMENT OF TRANSMISSION OIL AND FILTER ELEMENT

- (1) Operate the machine for a few minutes in order to warm the transmission oil.
- (2) Move the machine to flat ground. Lower the bucket to the ground and slightly apply downward force.
- (3) Press the parking brake switch and stop the engine.
- (4) Open transmission air breather to relieve internal air pressure.
- (5) Remove the transmission drain plug. Allow the transmission oil to drain into a suitable container.

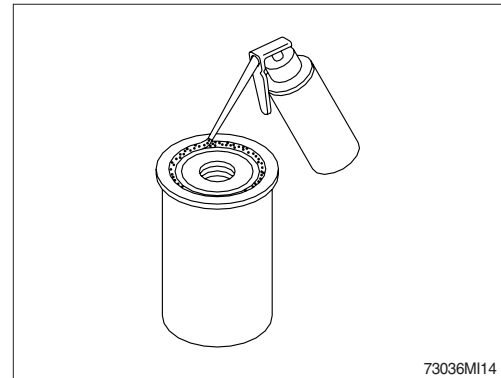


78096MI34

- (6) Remove the transmission oil filter cartridge.
Dispose of the used transmission oil filter cartridge properly.
- (7) Clean the filter cartridge mounting base.
Remove any part of the filter cartridge gasket that remains on the filter cartridge mounting base.

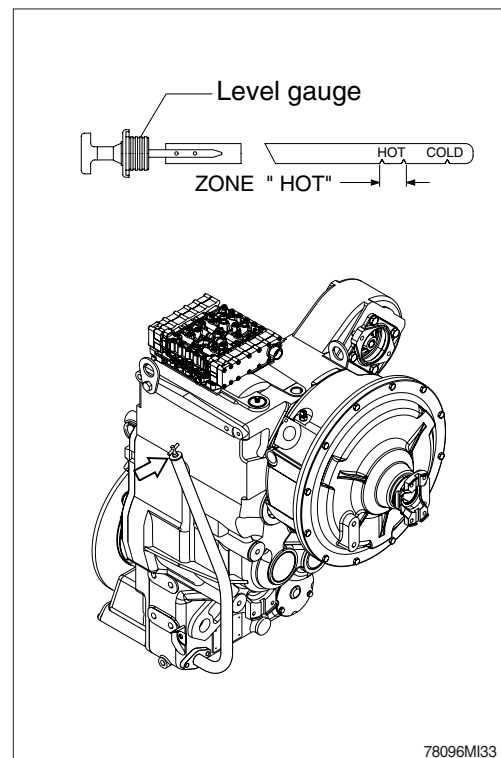


- (8) Apply a light coat of oil to the gasket of a new transmission oil filter cartridge.
- (9) Install the new transmission oil filter cartridge.
Screw the filter in until contacts with the sealing surface is obtained and tighten it now by hand about 1/3 to 1/2 turn.



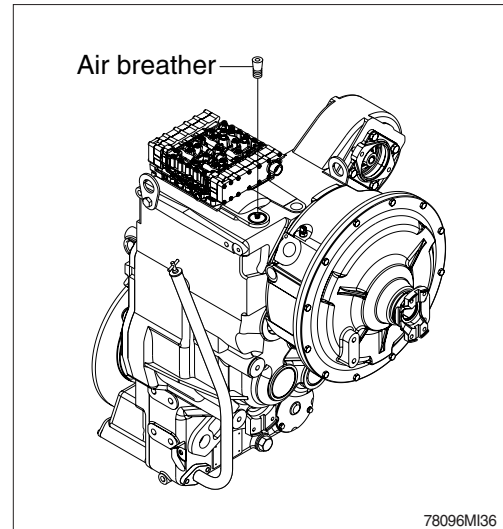
- (10) Mount the drain plug of transmission after cleaning it.
- (11) Fill the oil through level gauge inlet and check if the oil is at the appropriate level.
- (12) The proper oil amount is 43 liters (11.4 U.S. gallons)

- ⚠ **As the machine is hot after operation wait until the temperature has dropped.**
- ⚠ **It is imperative to pay attention to absolute cleanliness of oil and filter.**
Binding is in any case the marking on the oil level gauge.



29) CLEANING TRANSMISSION AIR BREATHER

- (1) Remove dust or debris around the air breather.
- (2) Remove the air breather and wash it with cleaning oil.



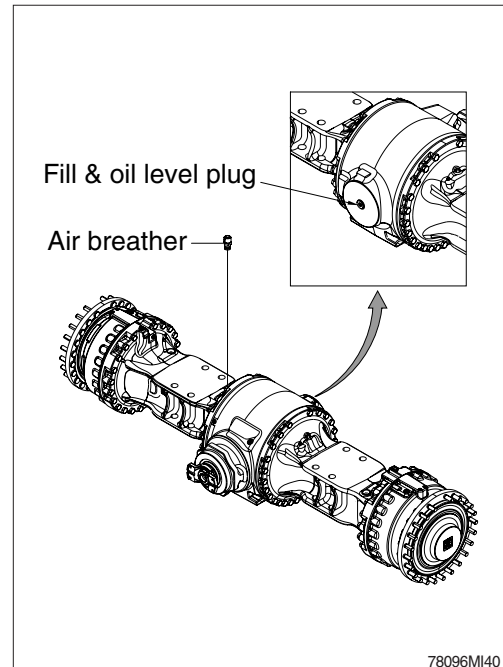
30) CHECK AND SUPPLYING AXLE OIL

- (1) Move the machine to flat ground.
- (2) Open the axle air breather to relieve internal air pressure.
- (3) Remove the plug and check the oil amount.
If the oil level is at the hole of the plug, it is normal.

※ Provide fill & level plug with O-ring and install it.

⚠ When checking the oil level, press the parking brake switch and fix front and rear frames using the safety lock bar.

⚠ As the machine is hot after operation, wait until the temperature has dropped.

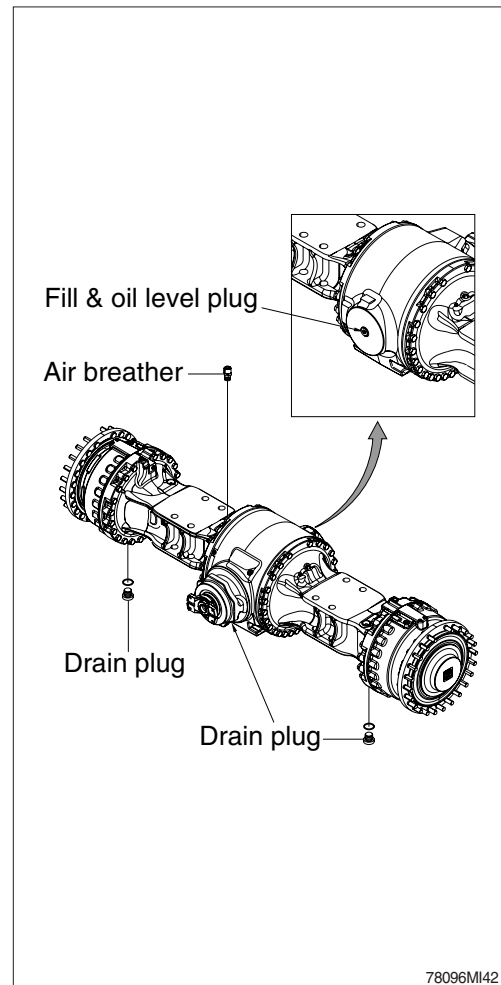


31) CHANGE THE AXLE OIL

- (1) Place a case under drain plug to catch oil.
- (2) Remove the air breather to relieve internal pressure.
- (3) The basic condition for a correct oil change of the axle is horizontal plane of installation in every direction.
Place machine in a horizontal position
- (4) All plugs must be cleaned carefully before opening.
- (5) Loosen drain plugs and drain oil.
- (6) Provide drain plugs with new O-ring and install them.
- (7) Fill up oil to the overflow on fill & level plug.
 - Oil amount
Front axle : 58 l (15.3 U.S. gal)
Rear axle : 58 l (15.3 U.S. gal)

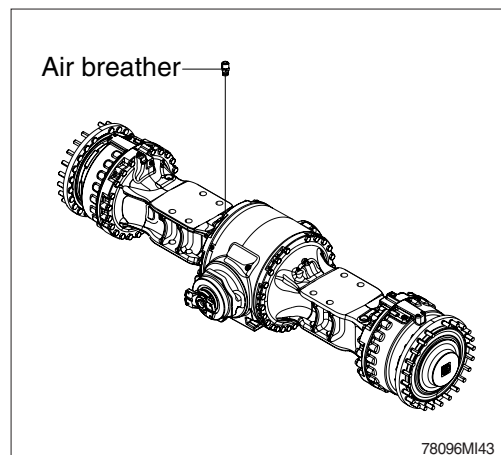
▲ As the machine is hot after operation, wait until the temperature has dropped.

※ If a work requires frequent use of brake, replace it earlier than normal change interval.



32) CLEANING AXLE BREATHER

- (1) Remove dust or debris around the breather.
- (2) Remove the breather and wash it with cleaning oil.



33) LUBRICATION

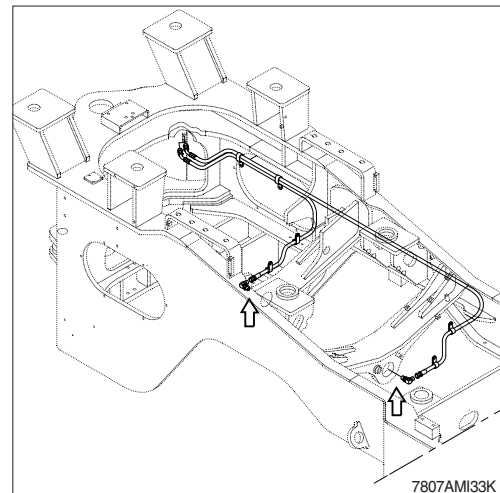
(1) Supply grease through the grease nipple, using grease gun.

(2) After lubricating, clean off spilled grease.

▲ Press the parking brake switch and fix front and rear frames using the safety lock bar.

▲ Set the work equipment in a stable position and put the pilot cut off switch in the OFF position.

(3) Rear axle pivot : 2EA

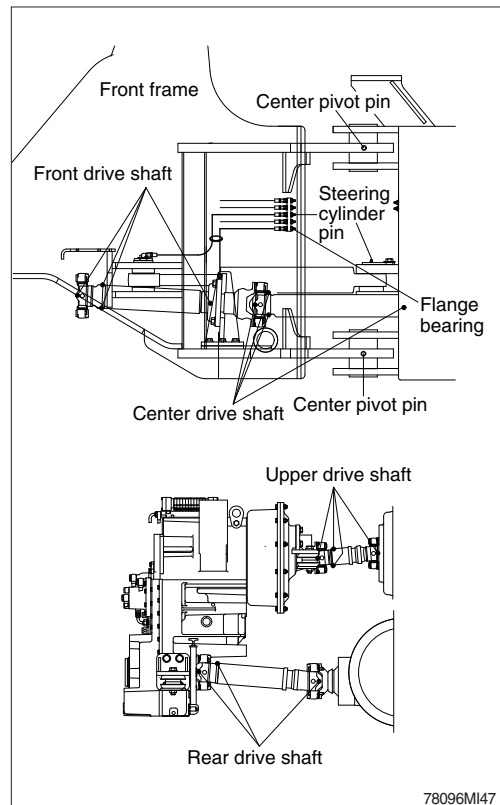


(4) Center pivot pin : 2EA

(5) Steering cylinder pin : 4EA

(6) Drive shaft

- Front (sleeve yoke, journal bearing) : 4EA
- Center (sleeve yoke, journal bearing) : 4EA
- Rear (sleeve yoke, journal bearing) : 3EA
- Upper (sleeve yoke, journal bearing) : 4EA
- Flange bearing : 1EA



34) REPLACEMENT OF BOLT ON CUTTING EDGE

(1) Replacement time

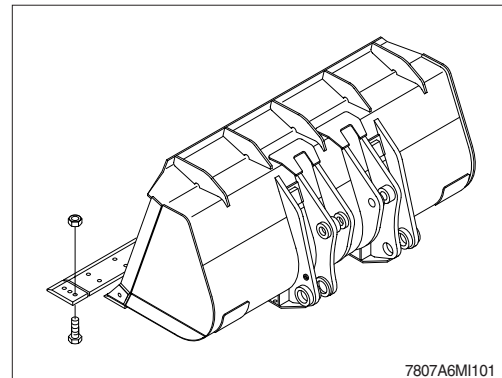
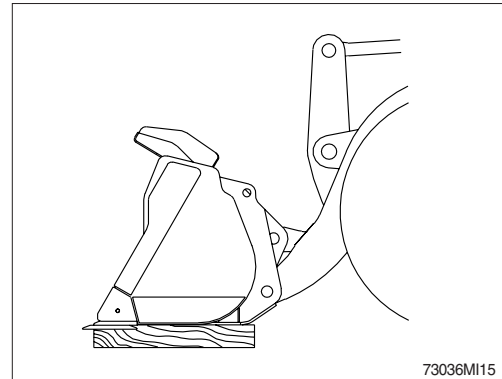
Replace the cutting edge before it has worn out to the end of bucket.

(2) Replacement method

▲ Make sure the work equipment does not move when replacing the cutting edge.

Set the work equipment in a stable position, put the hydraulic safety lever in the LOCK position and stop the engine.

- ① Lift the bucket to a proper height and insert blocks so that the bucket does not fall down.
- ② Loosen bolts and nuts, and remove the cutting edge.
- ③ Clean the contacted surface.
- ④ Turn the cutting edge and install on the bucket.
 - ※ **If both sides have worn out, replace it with new ones.**
 - ※ **If the contacted face of cutting edge has worn out, repair the contacted face of it.**
- ⑤ Tighten evenly bolts and nuts to remove the clearance between bucket and cutting edge.
 - Tightening torque : $275 \pm 40 \text{ kgf} \cdot \text{m}$
($1990 \pm 290 \text{ lbf} \cdot \text{ft}$)
- ⑥ After a few hours of operation, retighten bolts.



35) REPLACEMENT OF BUCKET TOOTH

(1) Replacement time

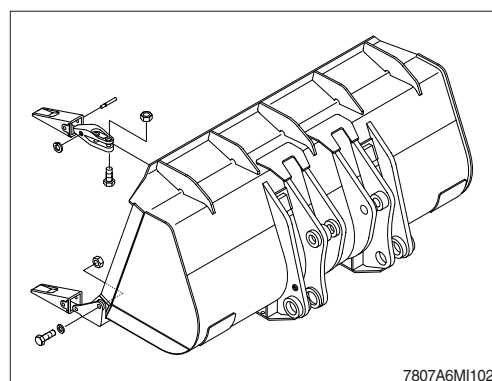
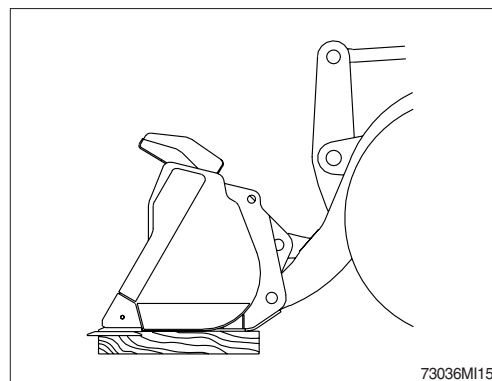
Replace the bucket tooth before it has worn out to the end of the bucket.

(2) Replacement method

▲ **Make sure the work equipment does not move when replacing the bucket tooth.**

Set the work equipment in a stable position, put the hydraulic safety lever in the LOCK position and stop the engine.

- ① Lift the bucket to a proper height and insert blocks so that the bucket does not fall down.
- ② Loosen bolts and nuts, and remove bucket tooth.
- ③ Clean the contacted surface.
- ※ **If the contacted face of bucket tooth has worn out, repair the contacted face of it.**
- ④ Install new bucket tooth on the bucket, and tighten bolts and nuts.
 - Tightening torque : $275 \pm 40 \text{ kgf} \cdot \text{m}$
($1990 \pm 290 \text{ lbf} \cdot \text{ft}$)
- ⑤ After a few hours of operation, retighten bolts.



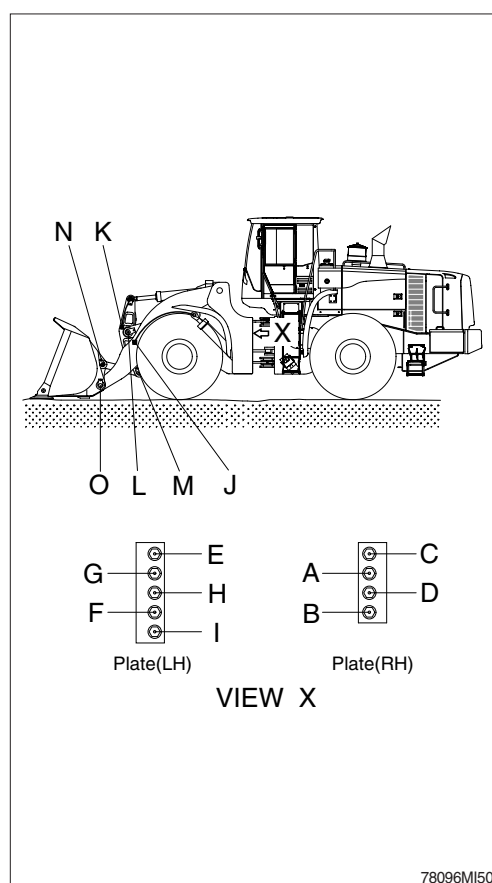
36) MAINTENANCE OF WORK EQUIPMENT

- (1) Lubricate to each pin of working device.

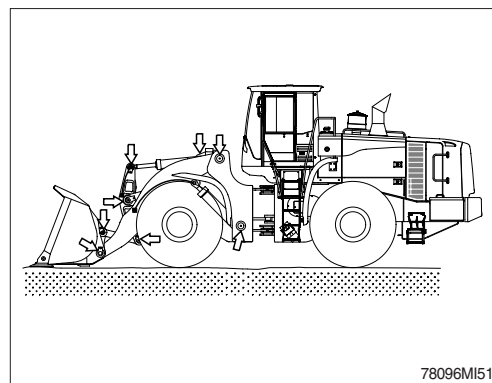
Lubricate the grease to grease nipple in accordance with lubrication intervals.

No.	Description	Qty
A	Bucket cylinder (front frame side) right pin	1
B	Boom cylinder (front frame side) right pin	1
C	Boom-front frame right connection pin	1
D	Steering cylinder (front frame side) right pin	1
E	Boom-front frame left connection pin	1
F	Boom cylinder (front frame side) left pin	1
G	Bucket cylinder (front frame side) left pin	1
H	Steering cylinder (front frame side) left pin	1
I	Drive shaft (middle) pin	1
J	Boom cylinder-boom connection pin	2
K	Bucket cylinder-bell crank connection pin	2
L	Boom-bell crank connection pin	2
M	Bell crank-bucket link connection pin	2
N	Bucket-Bucket link connection pin	2
O	Bucket-boom connection pin	2

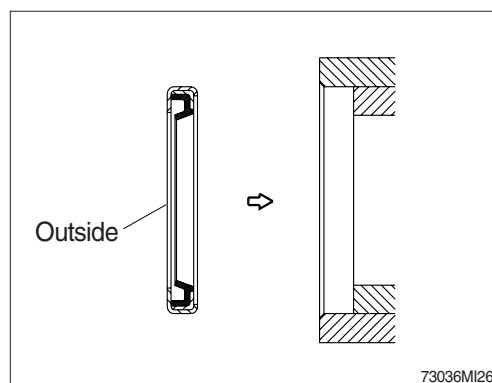
※ **Shorten lubricating interval when working in the water or dusty place.**



- (2) Check for wear and tear of work equipment pins and bushings.
- (3) Check for damage of boom and bell crank.

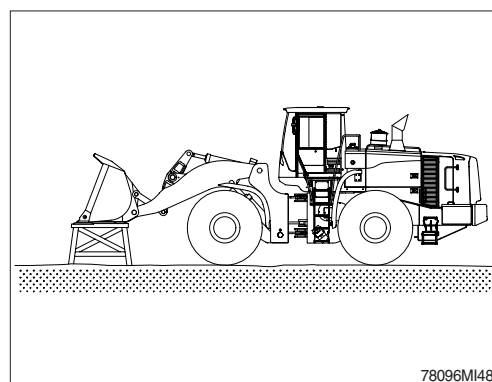


- (4) Dust seal are mounted on the rotating part of working device to extend the lubricating interval.
 - ※ Mount the lip to be faced out side when replace the dust seal.
 - ※ If it is assembled in wrong direction, it will cause fast wear of pin and bushing, and create noise and vibration during operation.
 - ※ Make sure the seals are not damaged or deformed.



37) WORK EQUIPMENT SUPPORT

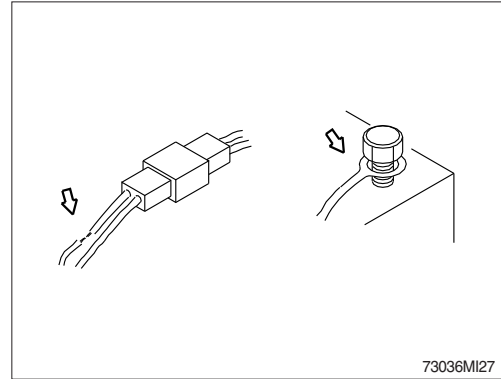
When carrying out inspection and maintenance with the equipment raised, fit a stand under the lift arm securely to prevent the work equipment from coming down. In addition, set the work equipment control levers to the Hold position and Lock with the hydraulic safety lever.



7. ELECTRICAL SYSTEM

1) WIRING, GAUGES

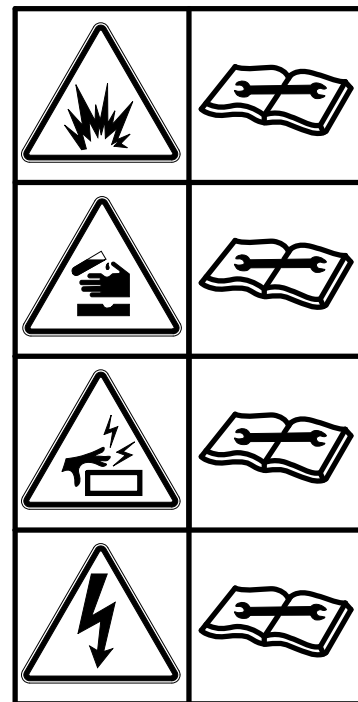
Check regularly and repair loose or malfunctioning gauges when found.



2) BATTERY

(1) Clean

- ① Wash the terminal with hot water if it is contaminated, and apply grease to the terminals after washing.
- ⚠ Battery gas can explode. Keep sparks and flames away from batteries.
- ⚠ Always wear protective glasses when working with batteries.
- ⚠ Do not stain clothes or skin with electrolyte as it is acid.
Be careful not to get the electrolyte in eyes.
Wash with clean water and go to the doctor if it enters the eyes.
- ⚠ Avoid short-circuiting the battery terminals through accidental contact with metallic objects, such as tools, across the terminals.
- ⚠ Do not store tools, bucket tooth and other flammable things in battery box. They could cause a fire.
- ⚠ Tighten the battery terminals securely.
Loosened terminals can generate sparks and lead to explosion.
- ⚠ Make sure that the battery terminal's caps always are installed.



7579A0FW30

(2) Recycle

Never discard a battery.

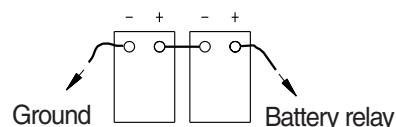
Always return used batteries to one of the following locations.

- A battery supplier
- An authorized battery collection facility
- Recycling facility

(3) Method of removing the battery cable

Remove the cable from the ground connection first (⊖ terminal side) and reconnect it last when reassembling.

※ Pay attention to the correct polarity.



13036MI32

3) STARTING THE ENGINE WITH A BOOSTER CABLE

Keep following order when you are going to start engine using booster cable.

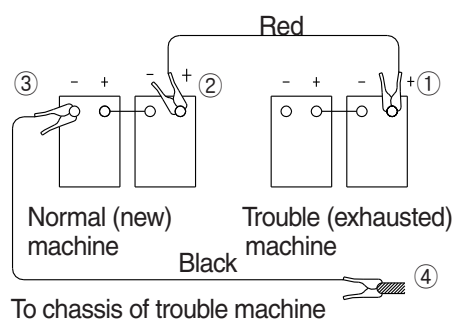
(1) Connection of booster cable

※ Use the same capacity of battery for starting

- ① Connect the red terminal of booster cable to the battery(+) terminal between exhausted and new battery.
- ② Connect the black terminal of the booster cable to the battery (-) terminal between exhausted and new battery.

※ Keep firmly all connection, the spark will be caused when connecting finally.

Connection of booster cable

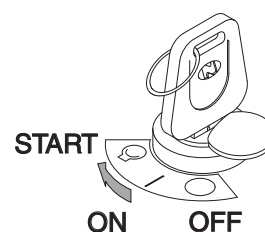


Connection order : ① → ② → ③ → ④

73036MI31

(2) Starting the engine

- ① Start engine with starting key.
- ② If you can not start it by one time, restart the engine after 2 minutes.



77074OP04

(3) Taking off the booster cable

- ① Take off the booster cable (black).
- ② Take off the booster cable (red) connected to the (+) terminal.
- ③ Run engine with high idle until charging the exhausted battery by alternator, fully.

▲ Explosive gas is generated while using the battery or charging it. Keep away flame and be careful not to cause the spark.

※ Charge the battery in the well ventilated place.

※ Place the machine on the earth or concrete.

Avoid to charge the machine on the steel plate.

※ Do not connect (+) terminal and (-) terminal when connecting booster cable because it will be shorted.

4) Welding repair

Before start to welding, follow the below procedure.

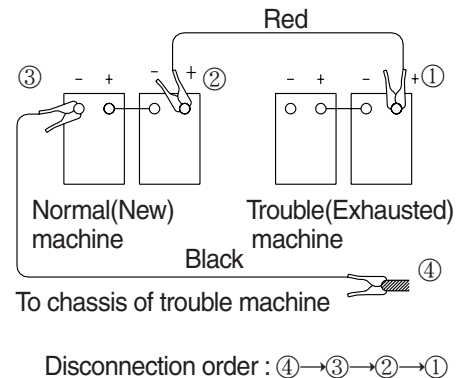
- (1) Shut off the engine and remove the starting switch.
- (2) Disconnect ground cable from battery by master switch.
- (3) Before carrying out any electric welding on the machine, the battery cables should be disconnected and the connectors pulled out of the electronic control units (MCU, TCU, ECU, cluster etc).
- (4) Connect the earth (ground) lead of the welding equipment as close to the welding points as possible.

※ Do not weld or flame cut on pipes or tubes that contain flammable fluids. Clean them thoroughly with nonflammable solvent before welding or flame cutting on them.

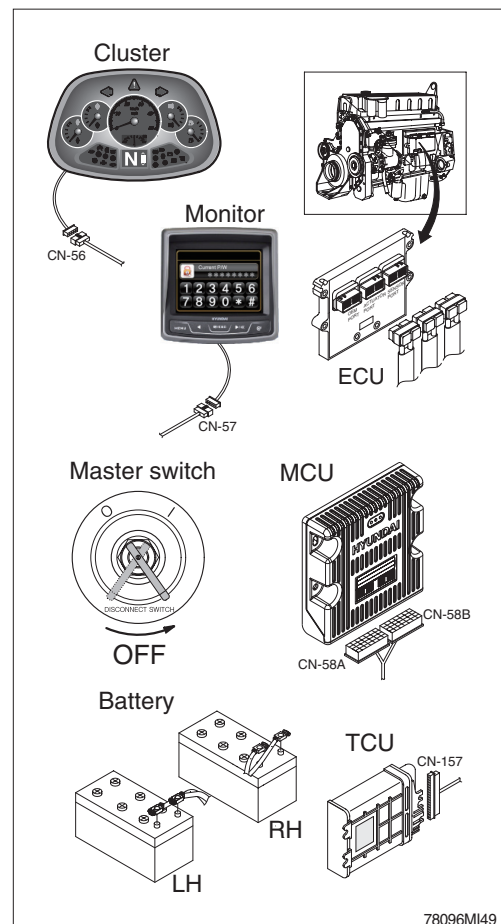
▲ Do not attempt to welding work before carry out the above.

If not, it will caused serious damage at electric system.

Disconnection of booster cable



73036MI31



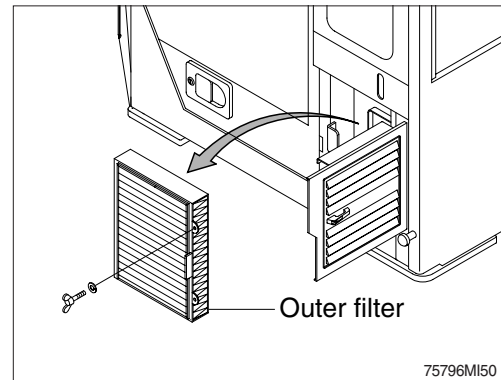
78096MI49

8. AIR CONDITIONER AND HEATER

1) CLEAN AND REPLACE OF OUTER FILTER

※ Always stop the engine before servicing.

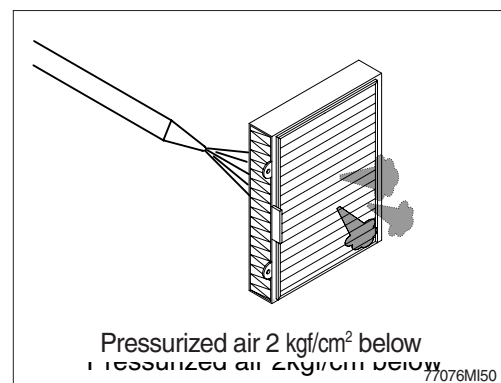
- (1) Open the door, loosen the wing bolt and remove the outer filter.



- (2) Clean the filter using a pressurized air (below 2 kgf/cm², 28 psi).

△ When using pressurized air, be sure to safety glasses.

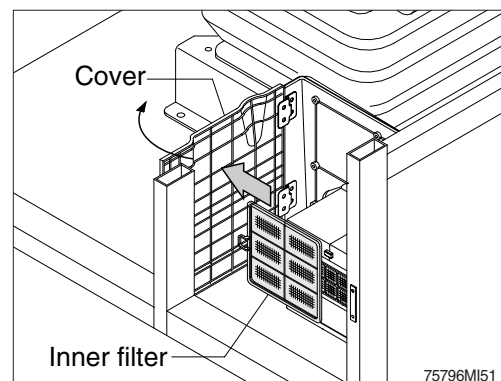
- (3) Inspect the filter after cleaning. If it is damaged or badly contaminated, use a new filter.



2) CLEAN AND REPLACE OF INNER FILTER

※ Always stop the engine before servicing.

- (1) Open the cover.
- (2) Remove the inner filter.

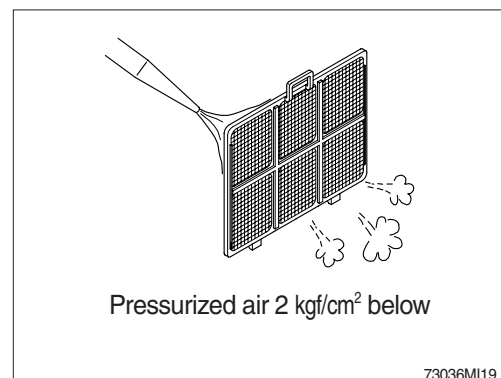


- (3) Clean the inner filter using a pressurized air (below 2 kgf/cm², 28 psi) or washing with water.

△ When using pressurized air, be sure to wear safety glasses.

- (4) Inspect the filter after cleaning. If it is damaged or badly contaminated, use a new filter.

※ Dry off after washing with water.



3) PRECAUTIONS FOR USING AIR CONDITIONER

- (1) When using the air conditioner for a long time, open the window once every one hour.
- (2) Be careful not to overcool the cab.
- (3) The cab is properly cooled if the operator feels cool when entering there from outside (about 5°C lower than the outside temperature).
- (4) When cooling, change air occasionally.

4) CHECK DURING SEASON

Ask the service center for replenishment of refrigerant or other maintenance service so that the cooling performance is not damaged.

5) CHECK DURING OFF-SEASON

Operate the air conditioner 2 or 3 times a month (each for a few minutes) to avoid loss of oil film in the compressor.

6) REFRIGERANT (R134-a) AMOUNT : 850 ± 30 g (with receiver drier)

7) COMPRESSOR LUBRICANT OIL (SYNTHETIC OIL) : 265mL